

Anti-PIK3R3 antibody

Cat. No.	ml261373
Package	25 µl/100 µl/200 µl
Storage	-20°C, pH7.4 PBS, 0.05% NaN ₃ , 40% Glycerol

Product overview

Description	Anti-PIK3R3 rabbit polyclonal antibody
Applications	ELISA, WB, IHC
Immunogen	Synthetic peptide of human PIK3R3
Reactivity	Human, Mouse, Rat
Content	0.2 mg/ml
Host species	Rabbit
Ig class	Immunogen-specific rabbit IgG
Purification	Antigen affinity purification

Target information

Symbol	PIK3R3
Full name	phosphoinositide-3-kinase, regulatory subunit 3 (gamma)

Synonyms p55; p55-GAMMA

Swissprot Q92569

Target Background

Phosphatidylinositol 3-kinase is a lipid kinase that phosphorylates the inositol ring of phosphatidylinositol and related compounds at the 3' position. PI 3-kinase p55 (PIK3R3) is comprised of a catalytic subunit and a regulatory subunit. The human p55 protein is composed of a rare amino terminal region followed by a proline-rich motif and two Src homology 2 (SH2) domains. PI 3-kinase p55 mRNAs are expressed in most human fetal and adult tissues; predominant expression is observed in the adult testis. Splice variant(s) of PI 3-kinase p55 have been identified; one of which has a deletion of 36 amino acids at the amino terminus and another which has an insertion of 59 amino acids at position 256 between the SH2 domains. Research suggests that PI 3-kinase p55 interacts with the IGFIR (Insulin-like growth factor-I receptor) and IR (Insulin receptor) and may be involved in PI 3-kinase activation by these receptors.

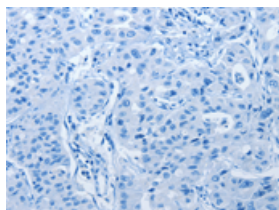
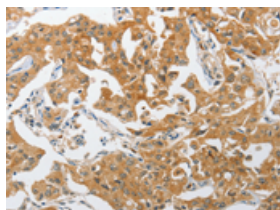
Applications

Immunohistochemistry

Predicted cell location: Cytoplasm

Positive control: Human lung cancer

Recommended dilution: 25-100

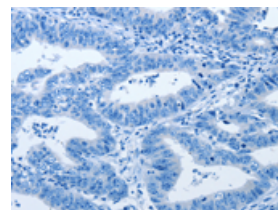
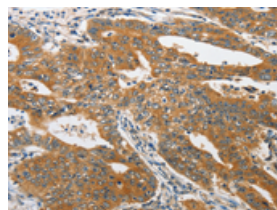


The image on the left is immunohistochemistry of paraffin-embedded Human lung cancer tissue using ml261373(PIK3R3 Antibody) at dilution 1/25, on the right is treated with synthetic peptide. (Original magnification: $\times 200$)

Predicted cell location: Cytoplasm

Positive control: Human gastric cancer

Recommended dilution: 25-100



The image on the left is immunohistochemistry of paraffin-embedded Human gastric cancer tissue using ml261373(PIK3R3 Antibody) at dilution 1/25, on the right is treated with synthetic peptide. (Original magnification: $\times 200$)

Western blotting

Predicted band size: 54 kDa

Positive control: Mouse brain, human fetal brain and mouse testis tissue, hela cells and human fetal kidney tissue

Recommended dilution: 500-2000

Gel: 10%SDS-PAGE

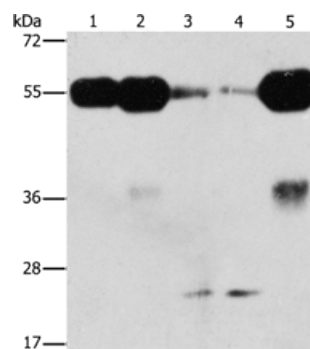
Lysate: 40 µg

Lane 1-5: Mouse brain tissue, human fetal brain tissue, mouse testis tissue, hela cells, human fetal kidney tissue

Primary antibody: ml261373(PIK3R3 Antibody) at dilution 1/250

Secondary antibody: Goat anti rabbit IgG at 1/8000 dilution

Exposure time: 2 minutes



ELISA

Recommended dilution: 2000-5000

联系电话: 4008-898-798, 021-61725725

联系QQ: 2881505695, 2881505696

邮箱: mlbio_cn@yeah.net

网址: www.mlbio.cn