

## Anti-GAPDHS antibody

<b>Cat. No.</b>	ml261392
<b>Package</b>	25 µl/100 µl/200 µl
<b>Storage</b>	-20°C, pH7.4 PBS, 0.05% NaN <sub>3</sub> , 40% Glycerol

### Product overview

<b>Description</b>	Anti-GAPDHS rabbit polyclonal antibody
<b>Applications</b>	ELISA, WB
<b>Immunogen</b>	Synthetic peptide of human GAPDHS
<b>Reactivity</b>	Human
<b>Content</b>	1.3 mg/ml
<b>Host species</b>	Rabbit
<b>Ig class</b>	Immunogen-specific rabbit IgG
<b>Purification</b>	Antigen affinity purification

### Target information

<b>Symbol</b>	GAPDHS
<b>Full name</b>	glyceraldehyde-3-phosphate dehydrogenase, spermatogenic
<b>Synonyms</b>	GAPD2; GAPDS; HSD-35; GAPDH-2
<b>Swissprot</b>	O14556

### Target Background

This gene encodes a protein belonging to the glyceraldehyde-3-phosphate dehydrogenase family of enzymes that play an important role in carbohydrate metabolism. Like its somatic cell counterpart, this sperm-specific enzyme functions in a nicotinamide adenine dinucleotide-dependent manner to remove hydrogen and add phosphate to glyceraldehyde 3-phosphate to form 1,3-diphosphoglycerate. During spermiogenesis, this enzyme may play an important role in regulating the switch between different energy-producing pathways, and it is required for sperm motility and male fertility.

订购热线: 4008-898-798

#### Applications

##### Western blotting

Predicted band size: 45 kDa

Positive control: A549 cells

Recommended dilution: 200-1000

Gel: 6% SDS-PAGE

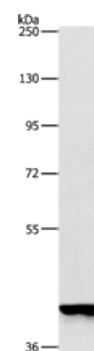
Lysate: 40 µg

Lane: A549 cells

Primary antibody: ml261392 (GAPDH Antibody) at dilution 1/375

Secondary antibody: Goat anti rabbit IgG at 1/8000 dilution

Exposure time: 20 seconds



##### ELISA

Recommended dilution: 1000-2000

联系电话: 4008-898-798, 021-61725725

联系QQ: 2881505695, 2881505696

邮箱: [mlbio\\_cn@yeah.net](mailto:mlbio_cn@yeah.net)

网址: [www.mlbio.cn](http://www.mlbio.cn)