

Anti-ARTN antibody

Cat. No.	ml261414
Package	25 µl/100 µl/200 µl
Storage	-20°C, pH7.4 PBS, 0.05% NaN ₃ , 40% Glycerol

Product overview

Description	Anti-ARTN rabbit polyclonal antibody
Applications	ELISA, WB
Immunogen	Synthetic peptide of human ARTN
Reactivity	Human, Mouse
Content	0.2 mg/ml
Host species	Rabbit
Ig class	Immunogen-specific rabbit IgG
Purification	Antigen affinity purification

Target information

Symbol	ARTN
Full name	artemin
Synonyms	EVN; NBN; ENOVIN
Swissprot	Q5T4W7

Target Background

The protein encoded by this gene is a member of the glial cell line-derived neurotrophic factor (GDNF) family of ligands which are a group of ligands within the TGF-beta superfamily of signaling molecules. GDNFs are unique in having neurotrophic properties and have potential use for gene therapy in neurodegenerative disease. Artemin has been shown in culture to support the survival of a number of peripheral neuron populations and at least one population of dopaminergic CNS neurons. Its role in the PNS and CNS is further substantiated by its expression pattern in the proximity of these neurons.

订购热线: 4008-898-798

Applications

Western blotting

Predicted band size: 23 kDa

Positive control: Human fetal liver and mouse pancreas tissue

Recommended dilution: 200-1000

Gel: 12% SDS-PAGE

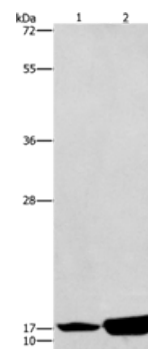
Lysate: 50 µg

Lane 1-2: Human fetal liver tissue, mouse pancreas tissue

Primary antibody: ml261414 (ARTN Antibody) at dilution 1/300

Secondary antibody: Goat anti rabbit IgG at 1/8000 dilution

Exposure time: 1 minute



ELISA

Recommended dilution: 1000-2000

联系电话: 4008-898-798, 021-61725725

联系QQ: 2881505695, 2881505696

邮箱: mlbio_cn@yeah.net

网址: www.mlbio.cn