

Anti-ASCC2 antibody

| | |
|-----------------|---|
| Cat. No. | ml261418 |
| Package | 25 µl/100 µl/200 µl |
| Storage | -20°C, pH7.4 PBS, 0.05% NaN ₃ , 40% Glycerol |

Product overview

| | |
|---------------------|---------------------------------------|
| Description | Anti-ASCC2 rabbit polyclonal antibody |
| Applications | ELISA, WB |
| Immunogen | Synthetic peptide of human ASCC2 |
| Reactivity | Human, Mouse |
| Content | 0.7 mg/ml |
| Host species | Rabbit |
| Ig class | Immunogen-specific rabbit IgG |
| Purification | Antigen affinity purification |

Target information

| | |
|------------------|--|
| Symbol | ASCC2 |
| Full name | activating signal cointegrator 1 complex subunit 2 |
| Synonyms | p100; ASC1p100 |
| Swissprot | Q9H1I8 |

Target Background

ASCC2 (activating signal cointegrator 1 complex subunit 2), also known as ASC1P100, is a 757 amino acid protein that is ubiquitously expressed and contains one CUE domain. The gene encoding ASCC2 maps to human chromosome 22, which houses over 500 genes and is the second smallest human chromosome. Mutations in several of the genes that map to chromosome 22 are involved in the development of Phelan-McDermid syndrome, Neurofibromatosis type 2, autism and schizophrenia. Additionally, translocations between chromosomes 9 and 22 may lead to the formation of the Philadelphia Chromosome and the subsequent production of the novel fusion protein BCR-Abl, a potent cell proliferation activator found in several types of leukemias.

订购热线: 4008-898-798

Applications

Western blotting

Predicted band size: 86 kDa

Positive control: A431, 293T and hela cells

Recommended dilution: 500-2000

Gel: 8%SDS-PAGE

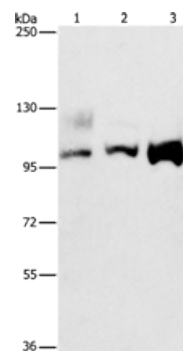
Lysate: 40 µg

Lane 1-3: A431 cells, 293T cells, hela cells

Primary antibody: ml261418(ASCC2 Antibody) at dilution 1/500

Secondary antibody: Goat anti rabbit IgG at 1/8000 dilution

Exposure time: 30 seconds



ELISA

Recommended dilution: 2000-5000

联系电话: 4008-898-798, 021-61725725

联系QQ: 2881505695, 2881505696

邮箱: mlbio_cn@yeah.net

网址: www.mlbio.cn