

Anti-CXCR6 antibody

Cat. No.	ml222171
Package	25 µl/100 µl/200 µl
Storage	-20°C, pH7.4 PBS, 0.05% NaN ₃ , 40% Glycerol

Product overview

Description	Anti-CXCR6 rabbit polyclonal antibody
Applications	ELISA, WB, IHC
Immunogen	Fusion protein of human CXCR6
Reactivity	Human, Mouse
Content	0.5 mg/ml
Host species	Rabbit
Ig class	Immunogen-specific rabbit IgG
Purification	Antigen affinity purification

Target information

Symbol	CXCR6
Full name	chemokine (C-X-C motif) receptor 6

Synonyms BONZO; CD186; STRL33; TYMSTR

Swissprot O00574

Target Background

Bonzo (also designated STRL33.3) and BOB (brother of Bonzo; also designated GRP15) are seven-transmembrane, G protein-coupled receptors that are closely related to chemokine receptor family members. In conjunction with CD4, several chemokine receptors are known to serve as receptors for HIV-1 entry into cells. Bonzo and BOB are utilized by simian immunodeficiency virus (SIV), HIV-2 and M-tropic HIV-1 for cell entry. Bonzo and BOB are both expressed in lymphoid tissues, and BOB is also expressed in colon.

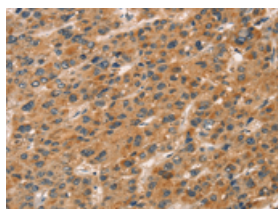
Applications

Immunohistochemistry

Predicted cell location: Cytoplasm

Positive control: Human liver cancer

Recommended dilution: 50-200

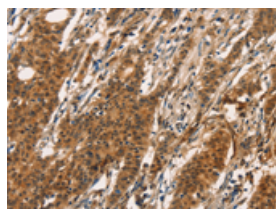


The image on the left is immunohistochemistry of paraffin-embedded Human liver cancer tissue using ml222171(CXCR6 Antibody) at dilution 1/20, on the right is treated with fusion protein. (Original magnification: $\times 200$)

Predicted cell location: Cytoplasm

Positive control: Human gastric cancer

Recommended dilution: 50-200



The image on the left is immunohistochemistry of paraffin-embedded Human gastric cancer tissue using ml222171(CXCR6 Antibody) at dilution 1/20, on the right is treated with fusion protein. (Original magnification: $\times 200$)

Western blotting

Predicted band size: 39 kDa

Positive control: Mouse brain tissue

Recommended dilution: 200-1000

Gel: 8%SDS-PAGE

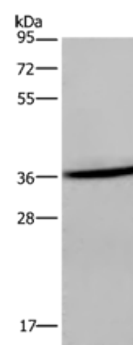
Lysate: 40 μ g

Lane: Mouse brain tissue

Primary antibody: ml222171(CXCR6 Antibody) at dilution 1/400

Secondary antibody: Goat anti rabbit IgG at 1/8000 dilution

Exposure time: 2 minutes



ELISA

Recommended dilution: 2000-5000

联系电话: 4008-898-798, 021-61725725

联系QQ: 2881505695, 2881505696

邮箱: mlbio_cn@yeah.net

网址: www.mlbio.cn