

Anti-TRIM49 antibody

Cat. No.	ml223352
Package	25 µl/100 µl/200 µl
Storage	-20°C, pH7.4 PBS, 0.05% NaN ₃ , 40% Glycerol

Product overview

Description	Anti-TRIM49 rabbit polyclonal antibody
Applications	ELISA, WB, IHC
Immunogen	Fusion protein of human TRIM49
Reactivity	Human
Content	0.7 mg/ml
Host species	Rabbit
Ig class	Immunogen-specific rabbit IgG
Purification	Antigen affinity purification

Target information

Symbol	TRIM49
Full name	tripartite motif containing 49

Synonyms RNF18; TRIM49A; TRIM49L2

Swissprot P0CI25

Target Background

The protein encoded by this gene contains a RING zinc finger, a motif known to be involved in protein-protein interactions. This gene has been found to be preferentially expressed in testis. Related pseudogenes and gene duplicates have also been identified on chromosome 11.

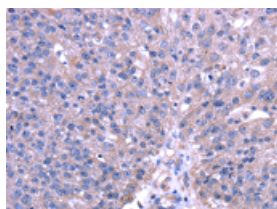
Applications

Immunohistochemistry

Predicted cell location: Cytoplasm

Positive control: Human breast cancer

Recommended dilution: 30-150

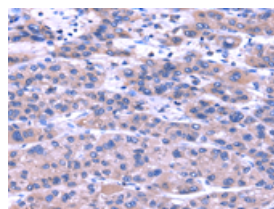


The image on the left is immunohistochemistry of paraffin-embedded Human breast cancer tissue using ml223352 (TRIM49 Antibody) at dilution 1/40, on the right is treated with fusion protein. (Original magnification: $\times 200$)

Predicted cell location: Cytoplasm

Positive control: Human liver cancer

Recommended dilution: 30-150



The image on the left is immunohistochemistry of paraffin-embedded Human liver cancer tissue using ml223352 (TRIM49 Antibody) at dilution 1/40, on the right is treated with fusion protein. (Original magnification: $\times 200$)

Western blotting

Predicted band size: 53 kDa

Positive control: 293T cells

Recommended dilution: 500-2000

Gel: 8%SDS-PAGE

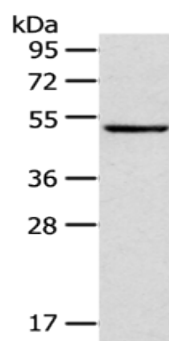
Lysate: 40 μ g

Lane: 293T cells

Primary antibody: ml223352(TRIM49 Antibody) at dilution 1/800

Secondary antibody: Goat anti rabbit IgG at 1/8000 dilution

Exposure time: 3 seconds



ELISA

Recommended dilution: 2000-5000

联系电话: 4008-898-798, 021-61725725

联系QQ: 2881505695, 2881505696

邮箱: mlbio_cn@yeah.net

网址: www.mlbio.cn