

Anti-AATF antibody

Cat. No.	ml261442
Package	25 µl/100 µl/200 µl
Storage	-20°C, pH7.4 PBS, 0.05% NaN ₃ , 40% Glycerol

Product overview

Description	Anti-AATF rabbit polyclonal antibody
Applications	ELISA, WB
Immunogen	Synthetic peptide of human AATF
Reactivity	Human, Mouse, Rat
Content	0.9 mg/ml
Host species	Rabbit
Ig class	Immunogen-specific rabbit IgG
Purification	Antigen affinity purification

Target information

Symbol	AATF
Full name	apoptosis antagonizing transcription factor
Synonyms	DED; BFR2; CHE1; CHE-1
Swissprot	Q9NY61

Target Background

The protein encoded by this gene was identified on the basis of its interaction with MAP3K12/DLK, a protein kinase known to be involved in the induction of cell apoptosis. This gene product contains a leucine zipper, which is a characteristic motif of transcription factors, and was shown to exhibit strong transactivation activity when fused to Gal4 DNA binding domain. Overexpression of this gene interfered with MAP3K12 induced apoptosis.

订购热线: 4008-898-798

Applications

Western blotting

Predicted band size: 63 kDa

Positive control: Mouse heart tissue and 231 cells

Recommended dilution: 200-1000

Gel: 6%SDS-PAGE

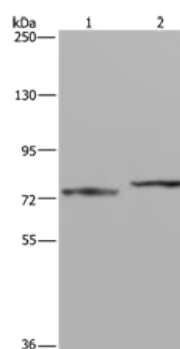
Lysate: 40 µg

Lane 1-2: Mouse heart tissue, 231 cells

Primary antibody: ml261442(AATF Antibody) at dilution 1/667

Secondary antibody: Goat anti rabbit IgG at 1/8000 dilution

Exposure time: 1 minute



ELISA

Recommended dilution: 1000-2000

联系电话: 4008-898-798, 021-61725725

联系QQ: 2881505695, 2881505696

邮箱: mlbio_cn@yeah.net

网址: www.mlbio.cn