

Anti-TMPRSS5 antibody

Cat. No.	ml223376
Package	25 µl/100 µl/200 µl
Storage	-20°C, pH7.4 PBS, 0.05% NaN ₃ , 40% Glycerol

Product overview

Description	Anti-TMPRSS5 rabbit polyclonal antibody
Applications	ELISA, WB, IHC
Immunogen	Fusion protein of human TMPRSS5
Reactivity	Human, Mouse
Content	0.3 mg/ml
Host species	Rabbit
Ig class	Immunogen-specific rabbit IgG
Purification	Antigen affinity purification

Target information

Symbol	TMPRSS5
Full name	transmembrane protease, serine 5

Synonyms SPINESIN

Swissprot Q9H3S3

Target Background

This gene encodes a protein that belongs to the serine protease family. Serine proteases are known to be involved in many physiological and pathological processes. Alternative splicing results in multiple transcript variants.

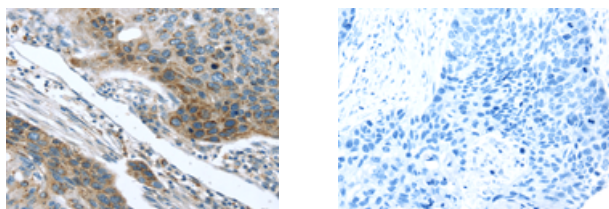
Applications

Immunohistochemistry

Predicted cell location: Cell membrane

Positive control: Human esophagus cancer

Recommended dilution: 10-50



The image on the left is immunohistochemistry of paraffin-embedded Human esophagus cancer tissue using ml223376(TMPRS5 Antibody) at dilution 1/25, on the right is treated with fusion protein.
(Original magnification: ×200)

Western blotting

Predicted band size: 50 kDa

Positive control: Human normal liver and kidney tissue

Recommended dilution: 200-1000

Gel: 8%SDS-PAGE

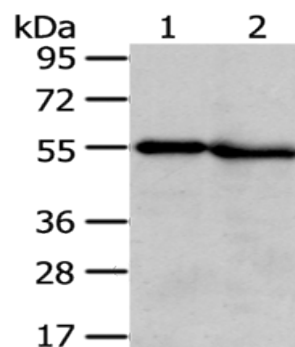
Lysate: 40 µg

Lane 1-2: Human normal liver tissue, Human kidney tissue

Primary antibody: ml223376(TMPRSS5 Antibody) at dilution 1/300

Secondary antibody: Goat anti rabbit IgG at 1/8000 dilution

Exposure time: 5 minutes



ELISA

Recommended dilution: 1000-2000

联系电话: 4008-898-798, 021-61725725

联系QQ: 2881505695, 2881505696

邮箱: mlbio_cn@yeah.net

网址: www.mlbio.cn