

Anti-ARL3 antibody

Cat. No.	ml261465
Package	25 µl/100 µl/200 µl
Storage	-20°C, pH7.4 PBS, 0.05% NaN ₃ , 40% Glycerol

Product overview

Description	Anti-ARL3 rabbit polyclonal antibody
Applications	ELISA, WB
Immunogen	Synthetic peptide of human ARL3
Reactivity	Human, Mouse, Rat
Content	0.2 mg/ml
Host species	Rabbit
Ig class	Immunogen-specific rabbit IgG
Purification	Antigen affinity purification

Target information

Symbol	ARL3
Full name	ADP-ribosylation factor-like 3
Synonyms	ARFL3
Swissprot	P36405

Target Background

ADP-ribosylation factor-like 3 is a member of the ADP-ribosylation factor family of GTP-binding proteins. ARL3 binds guanine nucleotides but lacks ADP-ribosylation factor activity. Small GTP-binding protein which cycles between an inactive GDP-bound and an active GTP-bound form, and the rate of cycling is regulated by guanine nucleotide exchange factors (GEF) and GTPase-activating proteins (GAP). Required for normal cytokinesis and cilia signaling. Requires assistance from GTPase-activating proteins (GAPs) like RP2 and PDE6D, in order to cycle between inactive GDP-bound and active GTP-bound forms.

订购热线: 4008-898-798

Applications

Western blotting

Predicted band size: 20 kDa

Positive control: Mouse brain tissue and 231 cells, A375 cells

Recommended dilution: 200-1000

Gel: 15% SDS-PAGE

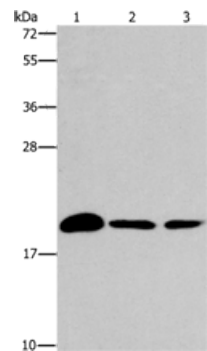
Lysate: 40 µg

Lane 1-3: Mouse brain tissue, 231 cells, A375 cells

Primary antibody: ml261465 (ARL3 Antibody) at dilution 1/433

Secondary antibody: Goat anti rabbit IgG at 1/8000 dilution

Exposure time: 2 minutes



ELISA

Recommended dilution: 1000-2000

联系电话: 4008-898-798, 021-61725725

联系QQ: 2881505695, 2881505696

邮箱: mlbio_cn@yeah.net

网址: www.mlbio.cn