

Anti-ERAP1 antibody

Cat. No.	ml261467
Package	25 µl/100 µl/200 µl
Storage	-20°C, pH7.4 PBS, 0.05% NaN ₃ , 40% Glycerol

Product overview

Description	Anti-ERAP1 rabbit polyclonal antibody
Applications	ELISA, WB
Immunogen	Synthetic peptide of human ERAP1
Reactivity	Human
Content	0.1 mg/ml
Host species	Rabbit
Ig class	Immunogen-specific rabbit IgG
Purification	Antigen affinity purification

Target information

Symbol	ERAP1
Full name	endoplasmic reticulum aminopeptidase 1
Synonyms	ALAP; A-LAP; ARTS1; ERAAP; APPILS; ARTS-1; ERAAP1; PILSAP; PILS-AP
Swissprot	Q9NZ08

Target Background

The protein encoded by this gene is an aminopeptidase involved in trimming HLA class I-binding precursors so that they can be presented on MHC class I molecules. The encoded protein acts as a monomer or as a heterodimer with ERAP2. This protein may also be involved in blood pressure regulation by inactivation of angiotensin II. Three transcript variants encoding two different isoforms have been found for this gene.

订购热线: 4008-898-798

Applications

Western blotting

Predicted band size: 107 kDa

Positive control: Raji cells

Recommended dilution: 200-1000

Gel: 6% SDS-PAGE

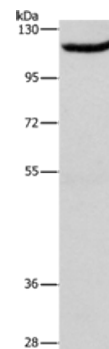
Lysate: 40 µg

Lane: Raji cells

Primary antibody: ml261467 (ERAP1 Antibody) at dilution 1/466

Secondary antibody: Goat anti rabbit IgG at 1/8000 dilution

Exposure time: 10 minutes



ELISA

Recommended dilution: 1000-2000

联系电话: 4008-898-798, 021-61725725

联系QQ: 2881505695, 2881505696

邮箱: mlbio_cn@yeah.net

网址: www.mlbio.cn