

Anti-ATAD5 antibody

Cat. No.	ml261469
Package	25 µl/100 µl/200 µl
Storage	-20°C, pH7.4 PBS, 0.05% NaN ₃ , 40% Glycerol

Product overview

Description	Anti-ATAD5 rabbit polyclonal antibody
Applications	ELISA, WB
Immunogen	Synthetic peptide of human ATAD5
Reactivity	Human
Content	0.4 mg/ml
Host species	Rabbit
Ig class	Immunogen-specific rabbit IgG
Purification	Antigen affinity purification

Target information

Symbol	ATAD5
Full name	ATPase family, AAA domain containing 5
Synonyms	ELG1; FRAG1; C17orf41
Swissprot	Q96QE3

Target Background

ATAD5 (ATPase family, AAA domain containing 5), also known as chromosome fragility-associated gene 1 protein, FRAG1 or ELG1, is a 1,844 amino acid nuclear protein that is involved in the DNA damage response and belongs to the AAA ATPase family. Existing as two alternatively spliced isoforms, ATAD5 interacts with Rad9 in growing cells where it assists in interactions between Rad9 and Bcl-2.

订购热线: 4008-898-798

Applications

Western blotting

Predicted band size: 207 kDa

Positive control: A431 cells

Recommended dilution: 200-1000

Gel: 8% SDS-PAGE

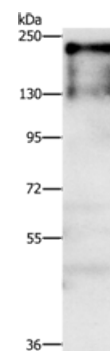
Lysate: 40 µg

Lane: A431 cells

Primary antibody: ml261469(ATAD5 Antibody) at dilution 1/750

Secondary antibody: Goat anti rabbit IgG at 1/8000 dilution

Exposure time: 1 minute



ELISA

Recommended dilution: 1000-2000

联系电话: 4008-898-798, 021-61725725

联系QQ: 2881505695, 2881505696

邮箱: mlbio_cn@yeah.net

网址: www.mlbio.cn