

## Anti-TGM4 antibody

<b>Cat. No.</b>	ml223399
<b>Package</b>	25 µl/100 µl/200 µl
<b>Storage</b>	-20°C, pH7.4 PBS, 0.05% NaN <sub>3</sub> , 40% Glycerol

### Product overview

<b>Description</b>	Anti-TGM4 rabbit polyclonal antibody
<b>Applications</b>	ELISA, WB, IHC
<b>Immunogen</b>	Fusion protein of human TGM4
<b>Reactivity</b>	Human
<b>Content</b>	0.3 mg/ml
<b>Host species</b>	Rabbit
<b>Ig class</b>	Immunogen-specific rabbit IgG
<b>Purification</b>	Antigen affinity purification

### Target information

<b>Symbol</b>	TGM4
<b>Full name</b>	transglutaminase 4

**Synonyms** TGP; hTGP

**Swissprot** P49221

#### **Target Background**

Transglutaminase 4 also known as TGM4, TGP or hTGP, is a typical TGase that is specifically expressed in prostate tissue. TGM4 are intercellularly localizing,  $\text{Ca}^{2+}$ -dependent enzymes, which catalyze the formation of isopeptide bonds by transferring an amine on to glutamyl residues, thereby cross-linking glutamine residues and lysine residues in substrate proteins. TGases influence numerous biological processes including blood coagulation, epidermal differentiation, seminal fluid coagulation, fertilization, cell differentiation and apoptosis.

## Applications

### Immunohistochemistry

Predicted cell location: Cytoplasm

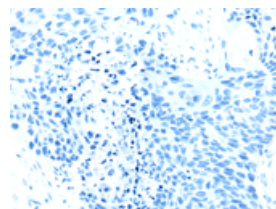
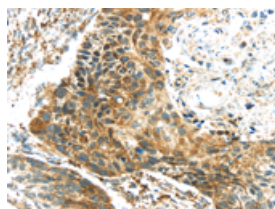
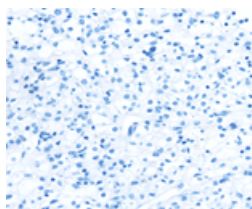
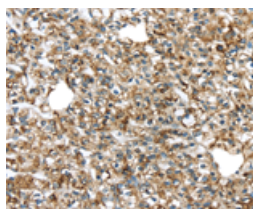
Predicted cell location: Cytoplasm

Positive control: Human prostate cancer

Positive control: Human esophagus cancer

Recommended dilution: 25-100

Recommended dilution: 25-100



The image on the left is immunohistochemistry of paraffin-embedded Human prostate cancer tissue using ml223399(TGM4 Antibody) at dilution 1/20, on the right is treated with fusion protein. (Original magnification: ×200)

The image on the left is immunohistochemistry of paraffin-embedded Human esophagus cancer tissue using ml223399(TGM4 Antibody) at dilution 1/20, on the right is treated with fusion protein. (Original magnification: ×200)

### Western blotting

Predicted band size: 77 kDa

Positive control: Hela, Incap, skov3, 293T and TM4 cell

Recommended dilution: 500-2000

Gel: 6%SDS-PAGE

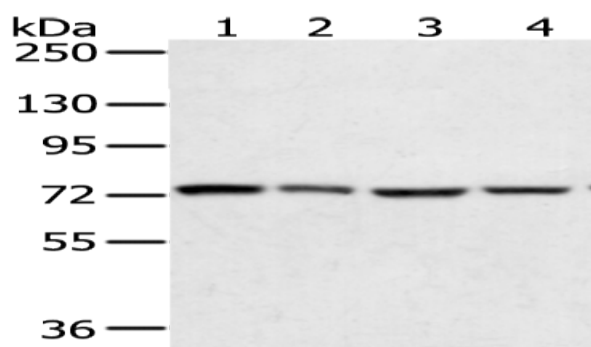
Lysate: 40  $\mu$ g

Lane 1-5: Hela, Incap, skov3, 293T and TM4 cell

Primary antibody: ml223399(TGM4 Antibody) at dilution 1/400

Secondary antibody: Goat anti rabbit IgG at 1/8000 dilution

Exposure time: 10 seconds



## ELISA

Recommended dilution: 2000-5000

联系电话: 4008-898-798, 021-61725725

联系QQ: 2881505695, 2881505696

邮箱: [mlbio\\_cn@yeah.net](mailto:mlbio_cn@yeah.net)

网址: [www.mlbio.cn](http://www.mlbio.cn)