

Anti-DDX19B antibody

Cat. No.	ml222222
Package	25 µl/100 µl/200 µl
Storage	-20°C, pH7.4 PBS, 0.05% NaN ₃ , 40% Glycerol

Product overview

Description	Anti-DDX19B rabbit polyclonal antibody
Applications	ELISA, WB, IHC
Immunogen	Fusion protein of human DDX19B
Reactivity	Human
Content	0.4 mg/ml
Host species	Rabbit
Ig class	Immunogen-specific rabbit IgG
Purification	Antigen affinity purification

Target information

Symbol	DDX19B
Full name	DEAD (Asp-Glu-Ala-Asp) box polypeptide 19B

Synonyms DBP5; RNAh; DDX19

Swissprot Q9UMR2

Target Background

DEAD box proteins, characterized by the conserved motif Asp-Glu-Ala-Asp (DEAD), are putative RNA helicases. They are implicated in a number of cellular processes involving alteration of RNA secondary structure such as translation initiation, nuclear and mitochondrial splicing, and ribosome and spliceosome assembly. Based on their distribution patterns, some members of this family are believed to be involved in embryogenesis, spermatogenesis, and cellular growth and division. This gene encodes a DEAD box protein, which exhibits RNA-dependent ATPase and ATP-dependent RNA-unwinding activities. This protein is recruited to the cytoplasmic fibrils of the nuclear pore complex, where it participates in the export of mRNA from the nucleus. Multiple alternatively spliced transcript variants encoding different isoforms have been found for this gene.

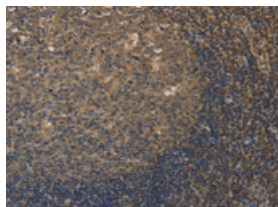
Applications

Immunohistochemistry

Predicted cell location: Cytoplasm

Positive control: Human tonsil

Recommended dilution: 50-200

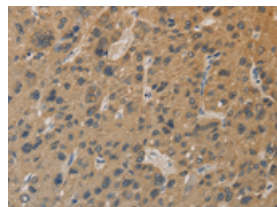


The image on the left is immunohistochemistry of paraffin-embedded Human tonsil tissue using ml222222(DDX19B Antibody) at dilution 1/20, on the right is treated with fusion protein. (Original magnification: $\times 200$)

Predicted cell location: Cytoplasm

Positive control: Human liver cancer

Recommended dilution: 50-200



The image on the left is immunohistochemistry of paraffin-embedded Human liver cancer tissue using ml222222(DDX19B Antibody) at dilution 1/20, on the right is treated with fusion protein. (Original magnification: $\times 200$)

Western blotting

Predicted band size: 54 kDa

Positive control: Hela cells

Recommended dilution: 500-2000

Gel: 8%SDS-PAGE

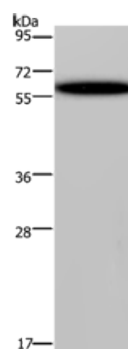
Lysate: 40 μ g

Lane: Hela cells

Primary antibody: ml222222(DDX19B Antibody) at dilution 1/400

Secondary antibody: Goat anti rabbit IgG at 1/8000 dilution

Exposure time: 40 seconds



ELISA

Recommended dilution: 2000-5000

联系电话: 4008-898-798, 021-61725725

联系QQ: 2881505695, 2881505696

邮箱: mlbio_cn@yeah.net

网址: www.mlbio.cn