

Anti-TXNDC5 antibody

Cat. No.	ml223454
Package	25 µl/100 µl/200 µl
Storage	-20°C, pH7.4 PBS, 0.05% NaN ₃ , 40% Glycerol

Product overview

Description	Anti-TXNDC5 rabbit polyclonal antibody
Applications	ELISA, WB, IHC
Immunogen	Full length fusion protein
Reactivity	Human, Mouse
Content	0.5 mg/ml
Host species	Rabbit
Ig class	Immunogen-specific rabbit IgG
Purification	Antigen affinity purification

Target information

Symbol	TXNDC5
Full name	BLOC1S5-TXNDC5 readthrough (NMD candidate)

Synonyms MUTED-TXNDC5

Swissprot Q8NBS9

Target Background

This locus represents naturally occurring read-through transcription between the neighboring MUTED (muted homolog) and TXNDC5 (thioredoxin domain containing 5) genes on chromosome 6. The read-through transcript is a candidate for nonsense-mediated mRNA decay (NMD) and is unlikely to produce a protein product.

Applications

Immunohistochemistry

Predicted cell location: Cytoplasm

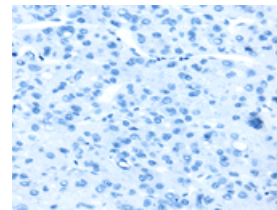
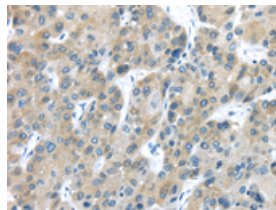
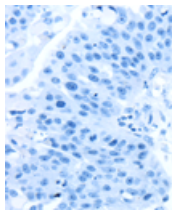
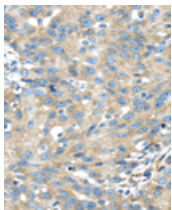
Predicted cell location: Cytoplasm

Positive control: Human breast cancer

Positive control: Human liver cancer

Recommended dilution: 30-150

Recommended dilution: 30-150



The image on the left is immunohistochemistry of paraffin-embedded Human breast cancer tissue using ml223454(TXNDC5 Antibody) at dilution 1/40, on the right is treated with fusion protein. (Original magnification: ×200)

The image on the left is immunohistochemistry of paraffin-embedded Human liver cancer tissue using ml223454(TXNDC5 Antibody) at dilution 1/40, on the right is treated with fusion protein. (Original magnification: ×200)

Western blotting

Predicted band size: 48 kDa

Positive control: 293T, hela and hepg2 cell, human placenta and fetal muscle tissue, PC3 and HT-29 cell

Recommended dilution: 1000-5000

Gel: 8%SDS-PAGE

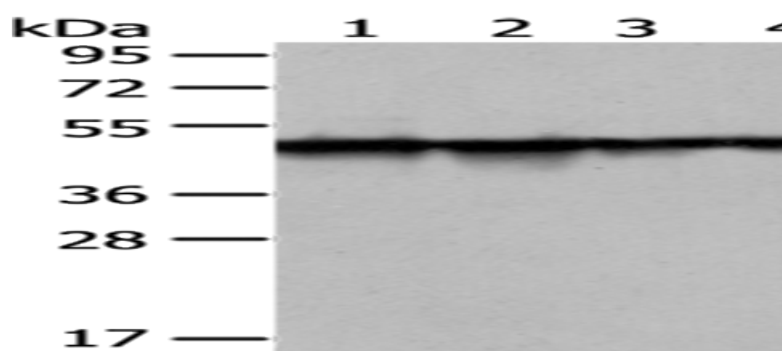
Lysate: 40 µg

Lane 1-7: 293T, hela and hepg2 cell, human
placenta and fetal muscle tissue, PC3 and HT-29
cell

Primary antibody: ml223454(TXNDC5 Antibody) at
dilution 1/500

Secondary antibody: Goat anti rabbit IgG at 1/8000
dilution

Exposure time: 7 seconds



ELISA

Recommended dilution: 2000-10000

联系电话: 4008-898-798, 021-61725725

联系QQ: 2881505695, 2881505696

邮箱: mlbio_cn@yeah.net

网址: www.mlbio.cn