

Anti-UBL4A antibody

Cat. No.	D223469
Package	25 µl/100 µl/200 µl
Storage	-20°C, pH7.4 PBS, 0.05% NaN ₃ , 40% Glycerol

Product overview

Description	Anti-UBL4A rabbit polyclonal antibody
Applications	ELISA, WB, IHC
Immunogen	Full length fusion protein
Reactivity	Human, Mouse, Rat
Content	0.5 mg/ml
Host species	Rabbit
Ig class	Immunogen-specific rabbit IgG
Purification	Antigen affinity purification

Target information

Symbol	UBL4A
Full name	ubiquitin-like 4A
Synonyms	GDX; G6PD; GET5; MDY2; UBL4; TMA24; DX254E; DXS254E
Swissprot	P11441

Target Background

UBL4A, also known as GDX, has been characterized as a ubiquitously expressed and highly conserved protein from humans to plants. The N-terminal region of UBL4A shares 43% sequence identity with ubiquitin, however the C-terminal region has no homology to ubiquitin and it is therefore unlikely that UBL4A plays any role in targeting cellular proteins for degradation.

订购热线: 4008-898-798

Applications

Immunohistochemistry

Predicted cell location: Cytoplasm

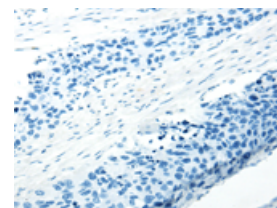
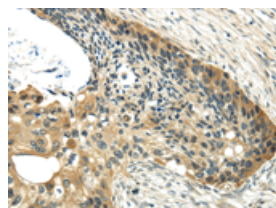
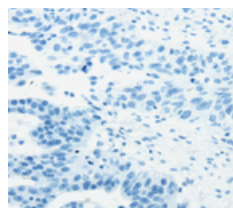
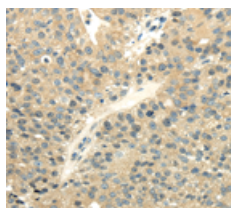
Positive control: Human breast cancer

Recommended dilution: 30-150

Predicted cell location: Cytoplasm

Positive control: Human esophagus cancer

Recommended dilution: 30-150



The image on the left is immunohistochemistry of paraffin-embedded Human breast cancer tissue using ml223469(UBL4A Antibody) at dilution 1/40, on the right is treated with fusion protein. (Original magnification: $\times 200$)

The image on the left is immunohistochemistry of paraffin-embedded Human esophagus cancer tissue using ml223469(UBL4A Antibody) at dilution 1/40, on the right is treated with fusion protein. (Original magnification: $\times 200$)

Western blotting

Predicted band size: 18 kDa

Positive control: Hepg2 and Jurkat cell, human fetal brain tissue and hela cell, A431 and PC3 cell

Recommended dilution: 1000-5000

Gel: 12% SDS-PAGE

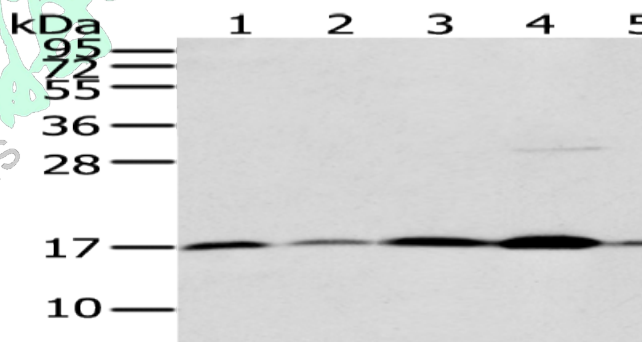
Lysate: 40 μ g

Lane 1-6: Hepg2 and Jurkat cell, human fetal brain tissue and hela cell, A431 and PC3 cell

Primary antibody: ml223469(UBL4A Antibody) at dilution 1/800

Secondary antibody: Goat anti rabbit IgG at 1/8000 dilution

Exposure time: 1 minute



ELISA

Recommended dilution: 2000-10000

联系电话: 4008-898-798, 021-61725725

联系QQ: 2881505695, 2881505696

邮箱: mlbio_cn@yeah.net

网址: www.mlbio.cn