

## Anti-PLA2G4B antibody

<b>Cat. No.</b>	ml261577
<b>Package</b>	25 µl/100 µl/200 µl
<b>Storage</b>	-20°C, pH7.4 PBS, 0.05% NaN <sub>3</sub> , 40% Glycerol

### Product overview

<b>Description</b>	Anti-PLA2G4B rabbit polyclonal antibody
<b>Applications</b>	ELISA, WB
<b>Immunogen</b>	Synthetic peptide of human PLA2G4B
<b>Reactivity</b>	Human, Mouse
<b>Content</b>	0.6 mg/ml
<b>Host species</b>	Rabbit
<b>Ig class</b>	Immunogen-specific rabbit IgG
<b>Purification</b>	Antigen affinity purification

### Target information

<b>Symbol</b>	PLA2G4B
<b>Full name</b>	phospholipase A2, group IVB (cytosolic)
<b>Synonyms</b>	HsT16992; cPLA2-beta
<b>Swissprot</b>	P0C869

### Target Background

This gene encodes a member of the cytosolic phospholipase A2 protein family. Phospholipase A2 enzymes hydrolyze the sn-2 bond of phospholipids, releasing lysophospholipids and fatty acids. This enzyme may be associated with mitochondria and early endosomes. Most tissues also express read-through transcripts from the upstream gene into this gene, some of which may encode fusion proteins combining the N-terminus of the upstream gene including its JmjC domain with the almost complete coding region of this gene, including the C2 and cytoplasmic phospholipase A2 domains.

订购热线: 4008-898-798

## Applications

### Western blotting

Predicted band size: 88 kDa

Positive control: Mouse stomach tissue, 293T and Jurkat cells

Recommended dilution: 1000-5000

Gel: 6%SDS-PAGE

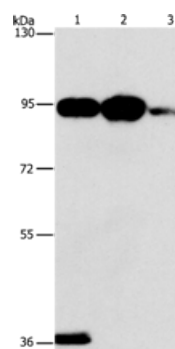
Lysate: 40 µg

Lane 1-3: Mouse stomach tissue, 293T cells, Jurkat cells

Primary antibody: ml261577(PLA2G4B Antibody) at dilution 1/1400

Secondary antibody: Goat anti rabbit IgG at 1/8000 dilution

Exposure time: 1 minute



### ELISA

Recommended dilution: 2000-10000

联系电话: 4008-898-798, 021-61725725

联系QQ: 2881505695, 2881505696

邮箱: [mlbio\\_cn@yeah.net](mailto:mlbio_cn@yeah.net)

网址: [www.mlbio.cn](http://www.mlbio.cn)