

## Anti-UQCRC2 antibody

<b>Cat. No.</b>	ml223505
<b>Package</b>	25 µl/100 µl/200 µl
<b>Storage</b>	-20°C, pH7.4 PBS, 0.05% NaN <sub>3</sub> , 40% Glycerol

### Product overview

<b>Description</b>	Anti-UQCRC2 rabbit polyclonal antibody
<b>Applications</b>	ELISA, WB, IHC
<b>Immunogen</b>	Fusion protein of human UQCRC2
<b>Reactivity</b>	Human, Mouse, Rat
<b>Content</b>	0.2 mg/ml
<b>Host species</b>	Rabbit
<b>Ig class</b>	Immunogen-specific rabbit IgG
<b>Purification</b>	Antigen affinity purification

### Target information

<b>Symbol</b>	UQCRC2
<b>Full name</b>	ubiquinol-cytochrome c reductase core protein II

**Synonyms** QCR2; UQCR2; MC3DN5

**Swissprot** P22695

#### Target Background

This is a component of the ubiquinol-cytochrome c reductase complex (complex III or cytochrome b-c1 complex), which is part of the mitochondrial respiratory chain. The core protein 2 is required for the assembly of the complex.

## Applications

### Immunohistochemistry

Predicted cell location: Cytoplasm

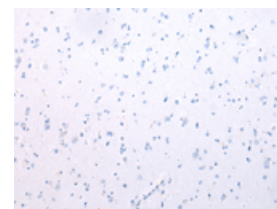
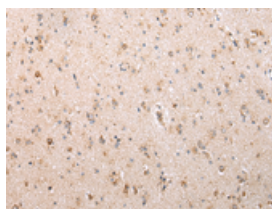
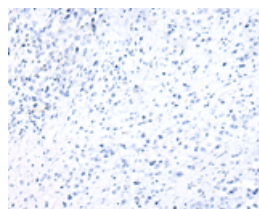
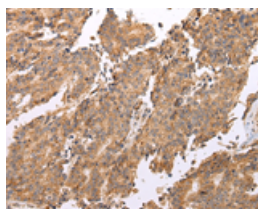
Positive control: Human prostate cancer

Recommended dilution: 25-100

Predicted cell location: Cytoplasm

Positive control: Human brain

Recommended dilution: 25-100



The image on the left is immunohistochemistry of paraffin-embedded Human prostate cancer tissue using ml223505(UQCRC2 Antibody) at dilution 1/25, on the right is treated with fusion protein. (Original magnification: ×200)

The image on the left is immunohistochemistry of paraffin-embedded Human brain tissue using ml223505(UQCRC2 Antibody) at dilution 1/25, on the right is treated with fusion protein. (Original magnification: ×200)

### Western blotting

Predicted band size: 48 kDa

Positive control: Jurkat, Raji, hepg2, A431 and HT-29 cell

Recommended dilution: 1000-5000

Gel: 8%SDS-PAGE

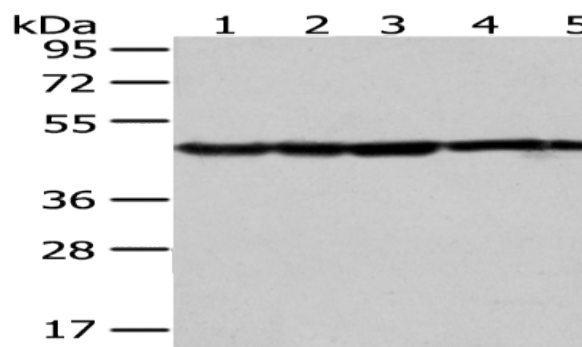
Lysate: 40 µg

Lane 1-5: Jurkat, Raji, hepg2, A431 and HT-29 cell

Primary antibody: ml223505(UQCRC2 Antibody) at dilution 1/400

Secondary antibody: Goat anti rabbit IgG at 1/8000 dilution

Exposure time: 10 seconds



#### ELISA

Recommended dilution: 2000-10000

联系电话: 4008-898-798, 021-61725725

联系QQ: 2881505695, 2881505696

邮箱: [mlbio\\_cn@yeah.net](mailto:mlbio_cn@yeah.net)

网址: [www.mlbio.cn](http://www.mlbio.cn)