

Anti-VAPA antibody

Cat. No.	ml223525
Package	25 µl/100 µl/200 µl
Storage	-20°C, pH7.4 PBS, 0.05% NaN ₃ , 40% Glycerol

Product overview

Description	Anti-VAPA rabbit polyclonal antibody
Applications	ELISA, WB, IHC
Immunogen	Full length fusion protein
Reactivity	Human, Mouse, Rat
Content	0.8 mg/ml
Host species	Rabbit
Ig class	Immunogen-specific rabbit IgG
Purification	Antigen affinity purification

Target information

Symbol	VAPA
Full name	VAMP (vesicle-associated membrane protein)-associated protein A, 33kDa

Synonyms VAP-A; VAP33; VAP-33; hVAP-33

Swissprot Q9P0L0

Target Background

The protein encoded by this gene is a type IV membrane protein. It is present in the plasma membrane and intracellular vesicles. It may also be associated with the cytoskeleton. This protein may function in vesicle trafficking, membrane fusion, protein complex assembly and cell motility. Alternative splicing occurs at this locus and two transcript variants encoding distinct isoforms have been identified.

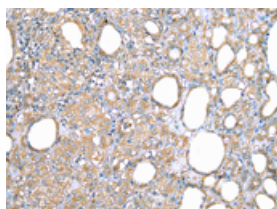
Applications

Immunohistochemistry

Predicted cell location: Cytoplasm

Positive control: Human thyroid cancer

Recommended dilution: 25-100

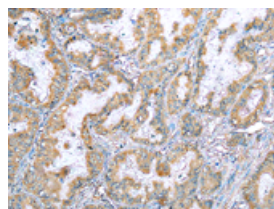


The image on the left is immunohistochemistry of paraffin-embedded Human thyroid cancer tissue using ml223525(VAPA Antibody) at dilution 1/35, on the right is treated with fusion protein. (Original magnification: $\times 200$)

Predicted cell location: Cytoplasm

Positive control: Human esophagus cancer

Recommended dilution: 25-100



The image on the left is immunohistochemistry of paraffin-embedded Human esophagus cancer tissue using ml223525(VAPA Antibody) at dilution 1/35, on the right is treated with fusion protein. (Original magnification: $\times 200$)

Western blotting

Predicted band size: 28 kDa

Positive control: NIH/3T3 cell

Recommended dilution: 500-2000

Gel: 8%SDS-PAGE

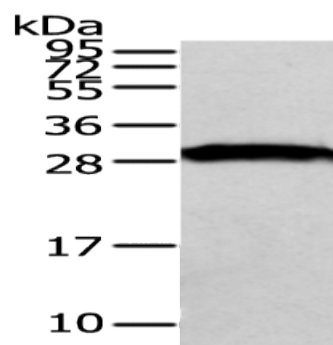
Lysate: 40 μ g

Lane: NIH/3T3 cell

Primary antibody: ml223525(VAPA Antibody) at dilution 1/500

Secondary antibody: Goat anti rabbit IgG at 1/8000 dilution

Exposure time: 1 second



ELISA

Recommended dilution: 2000-5000

联系电话: 4008-898-798, 021-61725725

联系QQ: 2881505695, 2881505696

邮箱: mlbio_cn@yeah.net

网址: www.mlbio.cn