

Anti-VASH2 antibody

Cat. No.	ml223528
Package	25 µl/100 µl/200 µl
Storage	-20°C, pH7.4 PBS, 0.05% NaN ₃ , 40% Glycerol

Product overview

Description	Anti-VASH2 rabbit polyclonal antibody
Applications	ELISA, WB
Immunogen	Full length fusion protein
Reactivity	Human, Mouse
Content	0.5 mg/ml
Host species	Rabbit
Ig class	Immunogen-specific rabbit IgG
Purification	Antigen affinity purification

Target information

Symbol	VASH2
Full name	vasohibin 2
Synonyms	
Swissprot	Q86V25

Target Background

Vasohibin-2, also known as VASH2, is a 355 amino acid protein belonging to the Vasohibin family. Expressed in various embryonic organs, Vasohibin-2 can be detected during embryonic weeks six through twelve and is found in vessels of 20-week embryonic organs as well as in endothelial cells of neonatal large vessels. Induced by VEGF, Vasohibin-2 is an angiogenesis inhibitor and interferes with the proliferation, migration and network formation by endothelial cells.

订购热线: 4008-898-798

Applications

Western blotting

Predicted band size: 40 kDa

Positive control: HeLa and 293T cell

Recommended dilution: 500-2000

Gel: 8% SDS-PAGE

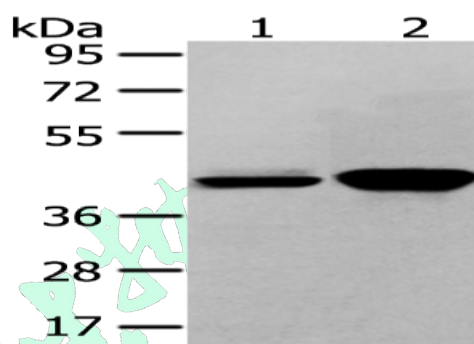
Lysate: 40 µg

Lane 1-2: HeLa and 293T cell

Primary antibody: ml223528 (VASH2 Antibody) at dilution 1/450

Secondary antibody: Goat anti rabbit IgG at 1/8000 dilution

Exposure time: 40 seconds



ELISA

Recommended dilution: 2000-5000

联系电话: 4008-898-798, 021-61725725

联系QQ: 2881505695, 2881505696

邮箱: mlbio_cn@yeah.net

网址: www.mlbio.cn