

Anti-WSB1 antibody

Cat. No.	ml223579
Package	25 µl/100 µl/200 µl
Storage	-20°C, pH7.4 PBS, 0.05% NaN ₃ , 40% Glycerol

Product overview

Description	Anti-WSB1 rabbit polyclonal antibody
Applications	ELISA, WB
Immunogen	Fusion protein of human WSB1
Reactivity	Human, Mouse
Content	0.5 mg/ml
Host species	Rabbit
Ig class	Immunogen-specific rabbit IgG
Purification	Antigen affinity purification

Target information

Symbol	WSB1
Full name	WD repeat and SOCS box containing 1
Synonyms	SWIP1; WSB-1
Swissprot	Q9Y6I7

Target Background

This gene encodes a member of the WD-protein subfamily. This protein shares a high sequence identity to mouse and chick proteins. It contains several WD-repeats spanning most of the protein and an SOCS box in the C-terminus. Alternatively spliced transcript variants encoding distinct isoforms have been found for this gene.

订购热线: 4008-898-798

Applications

Western blotting

Predicted band size: 47 kDa

Positive control: TM4 and NIH/3T3 cell

Recommended dilution: 500-2000

Gel: 8%SDS-
PAGE

Lysate: 40 µg

Lane 1-2: TM4

and NIH/3T3
cell

Primary

antibody:

ml223579(WSB

1 Antibody) at

dilution 1/350

Secondary

antibody: Goat

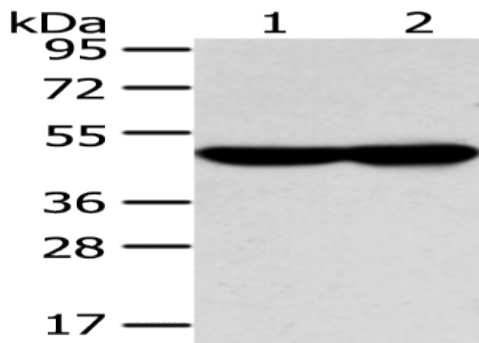
anti rabbit IgG

at 1/8000

dilution

Exposure time:

10 seconds



ELISA

Recommended dilution: 2000-5000

联系电话: 4008-898-798, 021-61725725

联系QQ: 2881505695, 2881505696



订购热线: 4008-898-798

邮箱: mlbio_cn@yeah.net

网址: www.mlbio.cn