

## Anti-NDUFB6 antibody

<b>Cat. No.</b>	ml223633
<b>Package</b>	25 µl/100 µl/200 µl
<b>Storage</b>	-20°C, pH7.4 PBS, 0.05% NaN <sub>3</sub> , 40% Glycerol

### Product overview

<b>Description</b>	Anti-NDUFB6 rabbit polyclonal antibody
<b>Applications</b>	ELISA, WB, IHC
<b>Immunogen</b>	Full length fusion protein
<b>Reactivity</b>	Human
<b>Content</b>	0.4 mg/ml
<b>Host species</b>	Rabbit
<b>Ig class</b>	Immunogen-specific rabbit IgG
<b>Purification</b>	Antigen affinity purification

### Target information

<b>Symbol</b>	NDUFB6
<b>Full name</b>	NADH dehydrogenase (ubiquinone) 1 beta subcomplex, 6, 17kDa

**Synonyms** CI; B17

**Swissprot** O95139

#### **Target Background**

The protein encoded by this gene is a subunit of the multisubunit NADH:ubiquinone oxidoreductase (complex I). Mammalian complex I is composed of 45 different subunits. It locates at the mitochondrial inner membrane. This protein has NADH dehydrogenase activity and oxidoreductase activity. It transfers electrons from NADH to the respiratory chain. The immediate electron acceptor for the enzyme is believed to be ubiquinone. Alternative splicing occurs at this locus and three transcript variants encoding distinct isoforms have been identified.

## Applications

### Immunohistochemistry

Predicted cell location: Cytoplasm

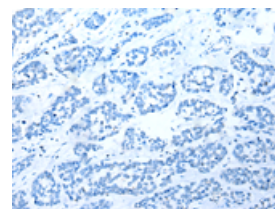
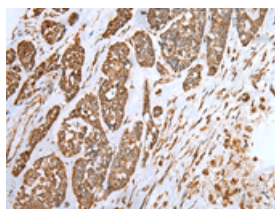
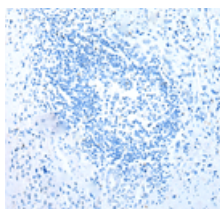
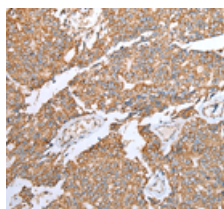
Predicted cell location: Cytoplasm

Positive control: Human prostate cancer

Positive control: Human esophagus cancer

Recommended dilution: 25-100

Recommended dilution: 25-100



The image on the left is immunohistochemistry of paraffin-embedded Human prostate cancer tissue using ml223633(NDUFB6 Antibody) at dilution 1/20, on the right is treated with fusion protein. (Original magnification: ×200)

The image on the left is immunohistochemistry of paraffin-embedded Human esophagus cancer tissue using ml223633(NDUFB6 Antibody) at dilution 1/20, on the right is treated with fusion protein. (Original magnification: ×200)

### Western blotting

Predicted band size: 15 kDa

Positive control: 293T, Hela, PC-3, Lncap and 231 cell, Human fetal muscle tissue

Recommended dilution: 500-2000

Gel: 12%SDS-PAGE

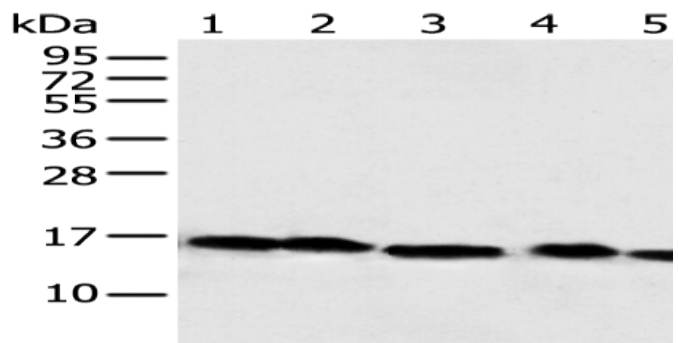
Lysate: 40 µg

Lane 1-6: 293T, Hela, PC-3, Lncap and 231 cell, Human  
fetal muscle tissue

Primary antibody: ml223633(NDUFB6 Antibody) at dilution 1/500

Secondary antibody: Goat anti rabbit IgG at 1/8000 dilution

Exposure time: 1 second



## ELISA

Recommended dilution: 5000-10000

联系电话: 4008-898-798, 021-61725725

联系QQ: 2881505695, 2881505696

邮箱: [mlbio\\_cn@yeah.net](mailto:mlbio_cn@yeah.net)

网址: [www.mlbio.cn](http://www.mlbio.cn)