

## Anti-CSTB antibody

<b>Cat. No.</b>	ml261602
<b>Package</b>	25 µl/100 µl/200 µl
<b>Storage</b>	-20°C, pH7.4 PBS, 0.05% NaN <sub>3</sub> , 40% Glycerol

### Product overview

<b>Description</b>	Anti-CSTB rabbit polyclonal antibody
<b>Applications</b>	ELISA, WB, IHC
<b>Immunogen</b>	Synthetic peptide of human CSTB
<b>Reactivity</b>	Human, Mouse
<b>Content</b>	0.7 mg/ml
<b>Host species</b>	Rabbit
<b>Ig class</b>	Immunogen-specific rabbit IgG
<b>Purification</b>	Antigen affinity purification

### Target information

<b>Symbol</b>	CSTB
<b>Full name</b>	cystatin B (stefin B)

**Synonyms** PME; ULD; CST6; EPM1; STFB; EPM1A

**Swissprot** P04080

### Target Background

The cystatin superfamily encompasses proteins that contain multiple cystatin-like sequences. Some of the members are active cysteine protease inhibitors, while others have lost or perhaps never acquired this inhibitory activity. There are three inhibitory families in the superfamily, including the type 1 cystatins (stefins), type 2 cystatins and kininogens. This gene encodes a stefin that functions as an intracellular thiol protease inhibitor. The protein is able to form a dimer stabilized by noncovalent forces, inhibiting papain and cathepsins I, h and b. The protein is thought to play a role in protecting against the proteases leaking from lysosomes.

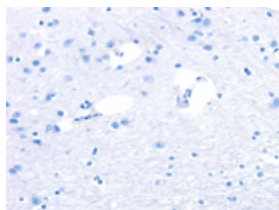
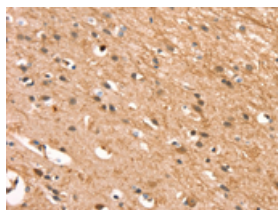
## Applications

### Immunohistochemistry

Predicted cell location: Cytoplasm and Nucleus

Positive control: Human brain

Recommended dilution: 25-100

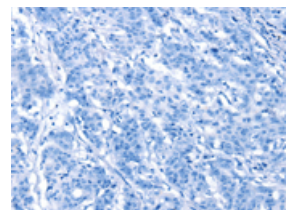
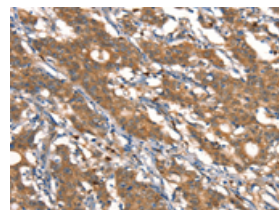


The image on the left is immunohistochemistry of paraffin-embedded Human brain tissue using ml261602(CSTB Antibody) at dilution 1/30, on the right is treated with synthetic peptide. (Original magnification: ×200)

Predicted cell location: Cytoplasm and Nucleus

Positive control: Human gastric cancer

Recommended dilution: 25-100



The image on the left is immunohistochemistry of paraffin-embedded Human gastric cancer tissue using ml261602(CSTB Antibody) at dilution 1/30, on the right is treated with synthetic peptide. (Original magnification: ×200)

### Western blotting

Predicted band size: 11 kDa

Positive control: Mouse spleen tissue

Recommended dilution: 200-1000

Gel: 10+12%SDS-PAGE

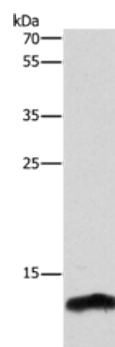
Lysate: 40  $\mu$ g

Lane: Mouse spleen tissue

Primary antibody: ml261602(CSTB Antibody) at dilution 1/300

Secondary antibody: Goat anti rabbit IgG at 1/8000 dilution

Exposure time: 2.5 minutes



#### ELISA

Recommended dilution: 1000-2000

联系电话: 4008-898-798, 021-61725725

联系QQ: 2881505695, 2881505696

邮箱: [mlbio\\_cn@yeah.net](mailto:mlbio_cn@yeah.net)

网址: [www.mlbio.cn](http://www.mlbio.cn)