

Anti-LMNTD1 antibody

Cat. No.	ml223660
Package	25 µl/100 µl/200 µl
Storage	-20°C, pH7.4 PBS, 0.05% NaN ₃ , 40% Glycerol

Product overview

Description	Anti-LMNTD1 rabbit polyclonal antibody
Applications	ELISA, WB, IHC
Immunogen	Fusion protein of human LMNTD1
Reactivity	Human
Content	0.7 mg/ml
Host species	Rabbit
Ig class	Immunogen-specific rabbit IgG
Purification	Antigen affinity purification

Target information

Symbol	LMNTD1
Full name	lamin tail domain containing 1

Synonyms IFLTD1; PAS1C1

Swissprot Q8N9Z9

Target Background

LMNTD1, also known as IFLTD1. IFLTD1 was initially identified as a candidate gene for pulmonary adenoma susceptibility 1 gene in mice. Transcripts of the gene were only detected in mouse lung tissue from strains carrying the Pas1-susceptible allele. Expression of different alleles of this gene in lung cancer cell lines resulted in different levels of colony formation in in vitro colony formation assays, suggesting that allelic variants of this gene can modulate growth of human cancer cells.

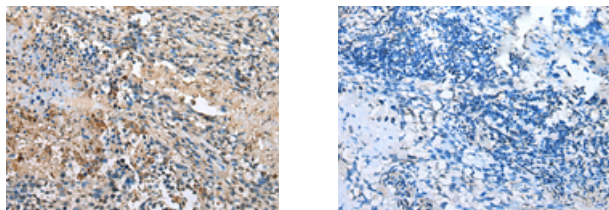
Applications

Immunohistochemistry

Predicted cell location: Cytoplasm

Positive control: Human lung cancer

Recommended dilution: 10-50



The image on the left is immunohistochemistry of paraffin-embedded Human lung cancer tissue using ml223660(LMNTD1 Antibody) at dilution 1/20, on the right is treated with fusion protein. (Original magnification: $\times 200$)

Western blotting

Predicted band size: 43 kDa

Positive control: HEPG2 cell lysate

Recommended dilution: 200-1000

Gel: 8%SDS-PAGE

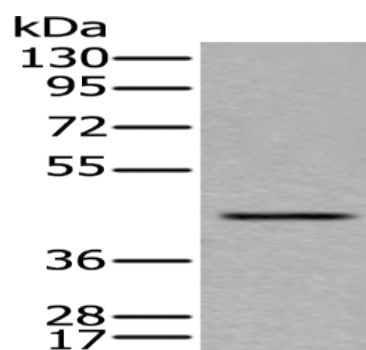
Lysate: 40 μ g

Lane: HEPG2 cell lysate

Primary antibody: ml223660(LMNTD1 Antibody) at dilution 1/200

Secondary antibody: Goat anti rabbit IgG at 1/8000 dilution

Exposure time: 5 seconds



ELISA

Recommended dilution: 5000-10000

联系电话: 4008-898-798, 021-61725725

联系QQ: 2881505695, 2881505696

邮箱: mlbio_cn@yeah.net

网址: www.mlbio.cn