

Anti-PRKDC antibody

Cat. No.	ml261628
Package	25 µl/100 µl/200 µl
Storage	-20°C, pH7.4 PBS, 0.05% NaN ₃ , 40% Glycerol

Product overview

Description	Anti-PRKDC rabbit polyclonal antibody
Applications	ELISA, WB, IHC
Immunogen	Synthetic peptide of human PRKDC
Reactivity	Human, Mouse
Content	0.5 mg/ml
Host species	Rabbit
Ig class	Immunogen-specific rabbit IgG
Purification	Antigen affinity purification

Target information

Symbol	PRKDC
Full name	protein kinase, DNA-activated, catalytic polypeptide

Synonyms HYRC; p350; DNAPK; DNPK1; HYRC1; IMD26; XRCC7; DNA-PKcs

Swissprot P78527

Target Background

This gene encodes the catalytic subunit of the DNA-dependent protein kinase (DNA-PK). It functions with the Ku70/Ku80 heterodimer protein in DNA double strand break repair and recombination. The protein encoded is a member of the PI3/PI4-kinase family.

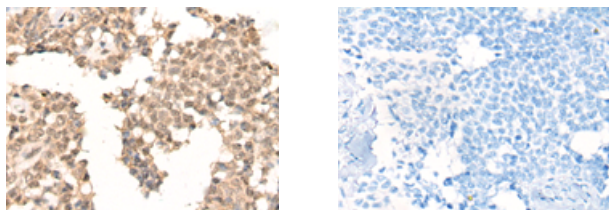
Applications

Immunohistochemistry

Predicted cell location: Nucleus

Positive control: Human ovarian cancer

Recommended dilution: 20-100



The image on the left is immunohistochemistry of paraffin-embedded Human ovarian cancer tissue using ml261628(PRKDC Antibody) at dilution 1/25, on the right is treated with synthetic peptide. (Original magnification: $\times 200$)

Western blotting

Predicted band size: 469 kDa

Positive control: 293T and K562 cell

Recommended dilution: 200-1000

Gel: 6%SDS-PAGE

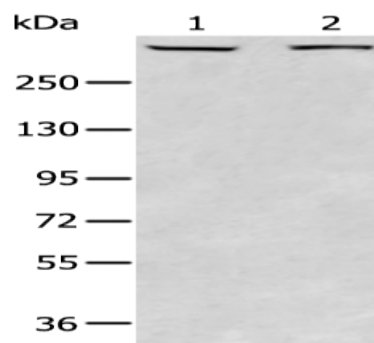
Lysate: 40 μ g

Lane 1-2: 293T and K562 cell

Primary antibody: ml261628(PRKDC Antibody) at dilution 1/200

Secondary antibody: Goat anti rabbit IgG at 1/8000 dilution

Exposure time: 20 seconds



ELISA

Recommended dilution: 5000-10000

联系电话: 4008-898-798, 021-61725725

联系QQ: 2881505695, 2881505696

邮箱: mlbio_cn@yeah.net

网址: www.mlbio.cn