

Anti-HDLBP antibody

| | |
|-----------------|---------------------------------------------------------|
| Cat. No. | ml261737 |
| Package | 25 µl/100 µl/200 µl |
| Storage | -20°C, pH7.4 PBS, 0.05% NaN ₃ , 40% Glycerol |

Product overview

| | |
|---------------------|---------------------------------------|
| Description | Anti-HDLBP rabbit polyclonal antibody |
| Applications | ELISA, WB, IHC |
| Immunogen | Synthetic peptide of human HDLBP |
| Reactivity | Human, Mouse, Rat |
| Content | 0.8 mg/ml |
| Host species | Rabbit |
| Ig class | Immunogen-specific rabbit IgG |
| Purification | Antigen affinity purification |

Target information

| | |
|------------------|------------------------------------------|
| Symbol | HDLBP |
| Full name | high density lipoprotein binding protein |

Synonyms HBP; VGL; PRO2900

Swissprot Q00341

Target Background

The protein encoded by this gene binds high density lipoprotein (HDL) and may function to regulate excess cholesterol levels in cells. The encoded protein also binds RNA and can induce heterochromatin formation. Three transcript variants encoding two different isoforms have been found for this gene.

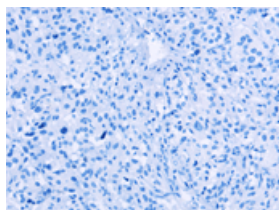
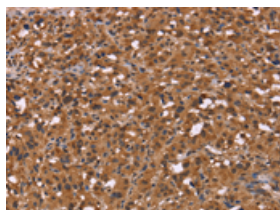
Applications

Immunohistochemistry

Predicted cell location: Cytoplasm and Nucleus

Positive control: Human thyroid cancer

Recommended dilution: 100-300

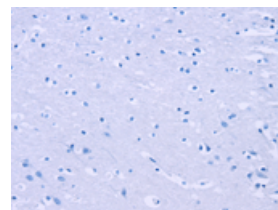
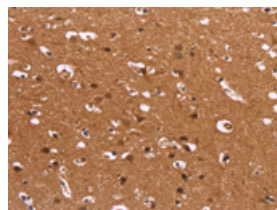


The image on the left is immunohistochemistry of paraffin-embedded Human thyroid cancer tissue using ml261737(HDLBP Antibody) at dilution 1/50, on the right is treated with synthetic peptide. (Original magnification: ×200)

Predicted cell location: Cytoplasm and Nucleus

Positive control: Human brain

Recommended dilution: 100-300



The image on the left is immunohistochemistry of paraffin-embedded Human brain tissue using ml261737(HDLBP Antibody) at dilution 1/50, on the right is treated with synthetic peptide. (Original magnification: ×200)

Western blotting

Predicted band size: 141 kDa

Positive control: NIH/3T3 cells

Recommended dilution: 500-2000

Gel: 6%SDS-PAGE

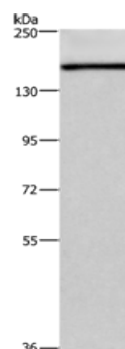
Lysate: 40 μ g

Lane: NIH/3T3 cells

Primary antibody: ml261737(HDLBP Antibody) at dilution 1/750

Secondary antibody: Goat anti rabbit IgG at 1/8000 dilution

Exposure time: 1 minute



ELISA

Recommended dilution: 2000-5000

联系电话: 4008-898-798, 021-61725725

联系QQ: 2881505695, 2881505696

邮箱: mlbio_cn@yeah.net

网址: www.mlbio.cn