

Anti-HRASLS2 antibody

Cat. No.	ml261756
Package	25 µl/100 µl/200 µl
Storage	-20°C, pH7.4 PBS, 0.05% NaN ₃ , 40% Glycerol

Product overview

Description	Anti-HRASLS2 rabbit polyclonal antibody
Applications	ELISA, WB, IHC
Immunogen	Synthetic peptide of human HRASLS2
Reactivity	Human, Mouse
Content	0.6 mg/ml
Host species	Rabbit
Ig class	Immunogen-specific rabbit IgG
Purification	Antigen affinity purification

Target information

Symbol	HRASLS2
Full name	HRAS-like suppressor 2

Synonyms	PLA1/2-2
Swissprot	Q9NWW9

Target Background

HRASLS2 (HRAS-like suppressor 2), also known as PLA1/2-2, is a 162 amino acid Cytoplasmic protein that belongs to the H-rev107 family. Expressed in liver, kidney, small intestine and colon, HRASLS2 exhibits PLA1/2 activity by catalyzing the calcium-independent hydrolysis of acyl groups in various phosphotidylcholines (PCs) and phosphatidylethanolamine (PE).

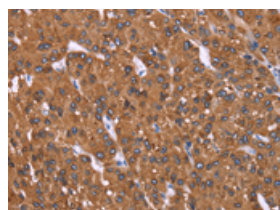
Applications

Immunohistochemistry

Predicted cell location: Cytoplasm

Positive control: Human liver cancer

Recommended dilution: 100-300

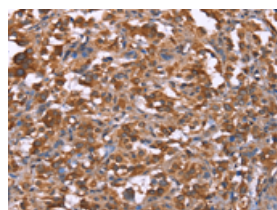


The image on the left is immunohistochemistry of paraffin-embedded Human liver cancer tissue using ml261756(HRASLS2 Antibody) at dilution 1/40, on the right is treated with synthetic peptide. (Original magnification: $\times 200$)

Predicted cell location: Cytoplasm

Positive control: Human thyroid cancer

Recommended dilution: 100-300



The image on the left is immunohistochemistry of paraffin-embedded Human thyroid cancer tissue using ml261756(HRASLS2 Antibody) at dilution 1/40, on the right is treated with synthetic peptide. (Original magnification: $\times 200$)

Western blotting

Predicted band size: 17 kDa

Positive control: Mouse kidney and liver tissue, human fetal liver tissue

Recommended dilution: 200-1000

Gel: 10%SDS-PAGE

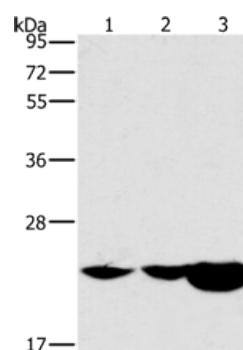
Lysate: 40 µg

Lane 1-3: Mouse kidney tissue, Mouse liver tissue, human fetal liver tissue

Primary antibody: ml261756(HRASLS2 Antibody) at dilution 1/362.5

Secondary antibody: Goat anti rabbit IgG at 1/8000 dilution

Exposure time: 40 seconds



ELISA

Recommended dilution: 2000-10000

联系电话: 4008-898-798, 021-61725725

联系QQ: 2881505695, 2881505696

邮箱: mlbio_cn@yeah.net

网址: www.mlbio.cn