

## Anti-IFNGR2 antibody

<b>Cat. No.</b>	ml261776
<b>Package</b>	25 µl/100 µl/200 µl
<b>Storage</b>	-20°C, pH7.4 PBS, 0.05% NaN <sub>3</sub> , 40% Glycerol

### Product overview

<b>Description</b>	Anti-IFNGR2 rabbit polyclonal antibody
<b>Applications</b>	ELISA, WB
<b>Immunogen</b>	Synthetic peptide of human IFNGR2
<b>Reactivity</b>	Human, Mouse
<b>Content</b>	0.4 mg/ml
<b>Host species</b>	Rabbit
<b>Ig class</b>	Immunogen-specific rabbit IgG
<b>Purification</b>	Antigen affinity purification

### Target information

<b>Symbol</b>	IFNGR2
<b>Full name</b>	interferon gamma receptor 2 (interferon gamma transducer 1)
<b>Synonyms</b>	AF-1; IFGR2; IFNGT1
<b>Swissprot</b>	P38484

### Target Background

This gene (IFNGR2) encodes the non-ligand-binding beta chain of the gamma interferon receptor. Human interferon-gamma receptor is a heterodimer of IFNGR1 and IFNGR2. Defects in IFNGR2 are a cause of mendelian susceptibility to mycobacterial disease (MSMD), also known as familial disseminated atypical mycobacterial infection. MSMD is a genetically heterogeneous disease with autosomal recessive, autosomal dominant or X-linked inheritance.

订购热线: 4008-898-798

#### Applications

##### Western blotting

Predicted band size: 38 kDa

Positive control: Mouse skeletal muscle tissue

Recommended dilution: 2000-5000

Gel: 8%SDS-PAGE

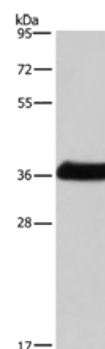
Lysate: 40 µg

Lane: Mouse skeletal muscle tissue

Primary antibody: ml261776(IFNGR2 Antibody) at dilution 1/400

Secondary antibody: Goat anti rabbit IgG at 1/8000 dilution

Exposure time: 40 seconds



##### ELISA

Recommended dilution: 500-2000

联系电话: 4008-898-798, 021-61725725

联系QQ: 2881505695, 2881505696

邮箱: [mlbio\\_cn@yeah.net](mailto:mlbio_cn@yeah.net)

网址: [www.mlbio.cn](http://www.mlbio.cn)