

Anti-IPO9 antibody

Cat. No.	ml261793
Package	25 µl/100 µl/200 µl
Storage	-20°C, pH7.4 PBS, 0.05% NaN ₃ , 40% Glycerol

Product overview

Description	Anti-IPO9 rabbit polyclonal antibody
Applications	ELISA, WB, IHC
Immunogen	Synthetic peptide of human IPO9
Reactivity	Human, Mouse
Content	0.6 mg/ml
Host species	Rabbit
Ig class	Immunogen-specific rabbit IgG
Purification	Antigen affinity purification

Target information

Symbol	IPO9
Full name	importin 9

Synonyms	Imp9
Swissprot	Q96P70

Target Background

Importin-9, also known as Imp9 or IPO9, is a 1,041 amino acid protein that contains one importin N-terminal domain and belongs to the Importin- β family. Localized to both the nucleus and the cytoplasm, Importin-9 functions as a nuclear transport receptor that mediates the docking of the Importin complex to the nuclear pore complex (NPC). Importin-9 mediates nuclear import of H2B histone, Ribosomal Protein S7 and Ribosomal Protein L18A. The gene encoding Importin-9 is located on human chromosome 1, the largest human chromosome that spans about 260 million base pairs and makes up 8% of the human genome.

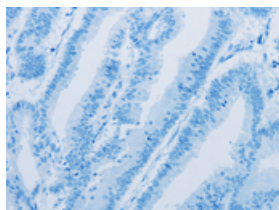
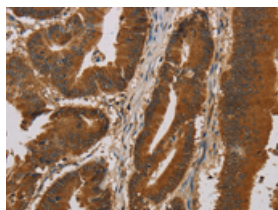
Applications

Immunohistochemistry

Predicted cell location: Cytoplasm

Positive control: Human colon cancer

Recommended dilution: 50-200

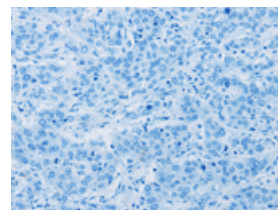
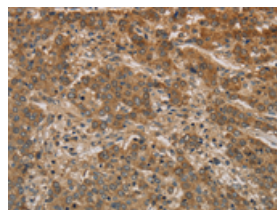


The image on the left is immunohistochemistry of paraffin-embedded Human colon cancer tissue using ml261793(IPO9 Antibody) at dilution 1/20, on the right is treated with synthetic peptide. (Original magnification: $\times 200$)

Predicted cell location: Cytoplasm

Positive control: Human liver cancer

Recommended dilution: 50-200



The image on the left is immunohistochemistry of paraffin-embedded Human liver cancer tissue using ml261793(IPO9 Antibody) at dilution 1/20, on the right is treated with synthetic peptide. (Original magnification: $\times 200$)

Western blotting

Predicted band size: 116 kDa

Positive control: Human fetal brain tissue and Hela cells

Recommended dilution: 200-1000

Gel: 6%SDS-PAGE

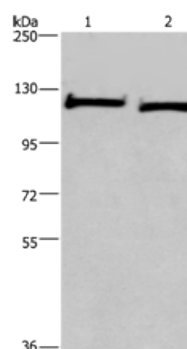
Lysate: 40 μ g

Lane 1-2: Human fetal brain tissue, Hela cells

Primary antibody: ml261793(IPO9 Antibody) at dilution 1/200

Secondary antibody: Goat anti rabbit IgG at 1/8000 dilution

Exposure time: 1 minute



ELISA

Recommended dilution: 1000-2000

联系电话: 4008-898-798, 021-61725725

联系QQ: 2881505695, 2881505696

邮箱: mlbio_cn@yeah.net

网址: www.mlbio.cn