

Anti-KLLN antibody

Cat. No.	ml261841
Package	25 µl/100 µl/200 µl
Storage	-20°C, pH7.4 PBS, 0.05% NaN ₃ , 40% Glycerol

Product overview

Description	Anti-KLLN rabbit polyclonal antibody
Applications	ELISA, WB
Immunogen	Synthetic peptide of human KLLN
Reactivity	Human
Content	1 mg/ml
Host species	Rabbit
Ig class	Immunogen-specific rabbit IgG
Purification	Antigen affinity purification

Target information

Symbol	KLLN
Full name	killin, p53-regulated DNA replication inhibitor
Synonyms	CWS4; KILLIN
Swissprot	B2CW77

Target Background

The protein encoded by this intronless gene is found in the nucleus, where it can inhibit DNA synthesis and promote S phase arrest coupled to apoptosis. The expression of this DNA binding protein is upregulated by transcription factor p53.

订购热线: 4008-898-798

Applications

Western blotting

Predicted band size: 20 kDa

Positive control: MCF-7 and Hela cells

Recommended dilution: 500-2000

Gel: 10% SDS-PAGE

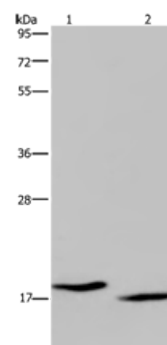
Lysate: 40 µg

Lane 1-2: MCF7 cells, Hela cells

Primary antibody: ml261841(KLLN Antibody) at dilution 1/350

Secondary antibody: Goat anti rabbit IgG at 1/8000 dilution

Exposure time: 2 minutes



ELISA

Recommended dilution: 2000-5000

联系电话: 4008-898-798, 021-61725725

联系QQ: 2881505695, 2881505696

邮箱: mlbio_cn@yeah.net

网址: www.mlbio.cn