

Anti-CERS5 antibody

Cat. No.	ml261850
Package	25 µl/100 µl/200 µl
Storage	-20°C, pH7.4 PBS, 0.05% NaN ₃ , 40% Glycerol

Product overview

Description	Anti-CERS5 rabbit polyclonal antibody
Applications	ELISA, WB, IHC
Immunogen	Synthetic peptide of human CERS5
Reactivity	Human, Mouse
Content	0.9 mg/ml
Host species	Rabbit
Ig class	Immunogen-specific rabbit IgG
Purification	Antigen affinity purification

Target information

Symbol	CERS5
Full name	ceramide synthase 5

Synonyms Trh4; LASS5

Swissprot Q8N5B7

Target Background

This gene encodes a protein that belongs to the TLC (TRAM, LAG1 and CLN8 homology domains) family of proteins. The encoded protein functions in the synthesis of ceramide, a lipid molecule that is involved in a several cellular signaling pathways. Alternate splicing results in multiple transcript variants.

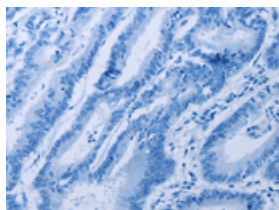
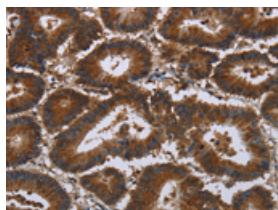
Applications

Immunohistochemistry

Predicted cell location: Cytoplasm or Nucleus

Positive control: Human colon cancer

Recommended dilution: 50-200

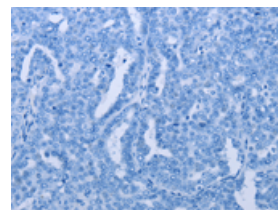
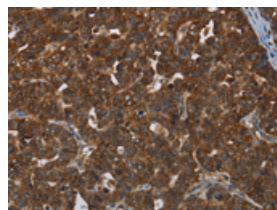


The image on the left is immunohistochemistry of paraffin-embedded Human colon cancer tissue using ml261850(CERS5 Antibody) at dilution 1/35, on the right is treated with synthetic peptide. (Original magnification: $\times 200$)

Predicted cell location: Cytoplasm or Nucleus

Positive control: Human cervical cancer

Recommended dilution: 50-200



The image on the left is immunohistochemistry of paraffin-embedded Human cervical cancer tissue using ml261850(CERS5 Antibody) at dilution 1/35, on the right is treated with synthetic peptide. (Original magnification: $\times 200$)

Western blotting

Predicted band size: 46 kDa

Positive control: Human fetal brain tissue

Recommended dilution: 200-1000

Gel: 8%SDS-PAGE

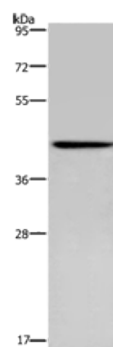
Lysate: 40 μ g

Lane: Human fetal brain tissue

Primary antibody: ml261850(CERS5 Antibody) at dilution 1/350

Secondary antibody: Goat anti rabbit IgG at 1/8000 dilution

Exposure time: 5 minutes



ELISA

Recommended dilution: 1000-2000

联系电话: 4008-898-798, 021-61725725

联系QQ: 2881505695, 2881505696

邮箱: mlbio_cn@yeah.net

网址: www.mlbio.cn