

## Anti-UBP1 antibody

<b>Cat. No.</b>	ml261852
<b>Package</b>	25 µl/100 µl/200 µl
<b>Storage</b>	-20°C, pH7.4 PBS, 0.05% NaN <sub>3</sub> , 40% Glycerol

### Product overview

<b>Description</b>	Anti-UBP1 rabbit polyclonal antibody
<b>Applications</b>	ELISA, WB, IHC
<b>Immunogen</b>	Synthetic peptide of human UBP1
<b>Reactivity</b>	Human, Mouse
<b>Content</b>	0.7 mg/ml
<b>Host species</b>	Rabbit
<b>Ig class</b>	Immunogen-specific rabbit IgG
<b>Purification</b>	Antigen affinity purification

### Target information

<b>Symbol</b>	UBP1
<b>Full name</b>	upstream binding protein 1 (LBP-1a)

**Synonyms** LBP1A; LBP1B; LBP-1B; LBP-1a

**Swissprot** Q9NZI7

#### **Target Background**

LBP1 (Upstream-binding protein 1), also designated UBP1, LBP1A or LBP1B, is a 540 amino acid protein that belongs to the grh/CP2 family (grainyhead transcription factor family). LBP1 is a transcriptional activator that regulates the placental expression of CYP11A1 and activates the Hemoglobin globin promoter in erythroid cells. LBP1 is responsible for repressing transcription of HIV-1 by binding to and preventing TFIID from interacting with its promoter region. Null expression of LBP1 causes uterine growth retardation in mice embryos suggesting a critical role in extraembryonic angiogenesis.

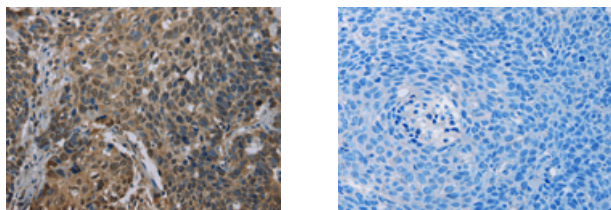
## Applications

### Immunohistochemistry

Predicted cell location: Nucleus

Positive control: Human cervical cancer

Recommended dilution: 50-200



The image on the left is immunohistochemistry of paraffin-embedded Human cervical cancer tissue using ml261852(UBP1 Antibody) at dilution 1/40, on the right is treated with synthetic peptide. (Original magnification:  $\times 200$ )

### Western blotting

Predicted band size: 60 kDa

Positive control: PC3 cells

Recommended dilution: 500-2000

Gel: 8%SDS-PAGE

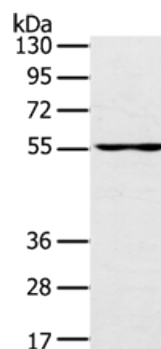
Lysate: 40  $\mu$ g

Lane: PC3 cells

Primary antibody: ml261852(UBP1 Antibody) at dilution 1/200

Secondary antibody: Goat anti rabbit IgG at 1/8000 dilution

Exposure time: 10 seconds



## ELISA

Recommended dilution: 2000-5000

联系电话: 4008-898-798, 021-61725725

联系QQ: 2881505695, 2881505696

邮箱: [mlbio\\_cn@yeah.net](mailto:mlbio_cn@yeah.net)

网址: [www.mlbio.cn](http://www.mlbio.cn)