

Anti-LILRA1 antibody

Cat. No.	ml261860
Package	25 µl/100 µl/200 µl
Storage	-20°C, pH7.4 PBS, 0.05% NaN ₃ , 40% Glycerol

Product overview

Description	Anti-LILRA1 rabbit polyclonal antibody
Applications	ELISA, WB
Immunogen	Synthetic peptide of human LILRA1
Reactivity	Human
Content	0.7 mg/ml
Host species	Rabbit
Ig class	Immunogen-specific rabbit IgG
Purification	Antigen affinity purification

Target information

Symbol	LILRA1
Full name	leukocyte immunoglobulin-like receptor, subfamily A (with TM domain), member 1
Synonyms	LIR6; CD85I; LIR-6
Swissprot	O75019

Target Background

This gene encodes an activating member of the leukocyte immunoglobulin-like receptor (LIR) family, which is found in a gene cluster at chromosomal region 19q13.4. The encoded protein is predominantly expressed in B cells, interacts with major histocompatibility complex class I ligands, and contributes to the regulation of immune responses. Alternative splicing results in multiple transcript variants encoding different isoforms.

订购热线: 4008-898-798

Applications

Western blotting

Predicted band size: 53 kDa

Positive control: Hela cells

Recommended dilution: 200-1000

Gel: 8% SDS-PAGE

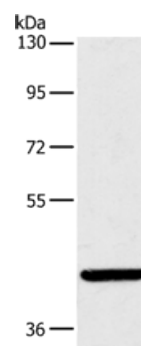
Lysate: 40 µg

Lane: Hela cells

Primary antibody: ml261860 (LILRA1 Antibody) at dilution 1/250

Secondary antibody: Goat anti rabbit IgG at 1/8000 dilution

Exposure time: 1 minute



ELISA

Recommended dilution: 1000-2000

联系电话: 4008-898-798, 021-61725725

联系QQ: 2881505695, 2881505696

邮箱: mlbio_cn@yeah.net

网址: www.mlbio.cn