

## Anti-MAGEL2 antibody

<b>Cat. No.</b>	ml261884
<b>Package</b>	25 µl/100 µl/200 µl
<b>Storage</b>	-20°C, pH7.4 PBS, 0.05% NaN <sub>3</sub> , 40% Glycerol

### Product overview

<b>Description</b>	Anti-MAGEL2 rabbit polyclonal antibody
<b>Applications</b>	ELISA, WB
<b>Immunogen</b>	Synthetic peptide of human MAGEL2
<b>Reactivity</b>	Human
<b>Content</b>	0.7 mg/ml
<b>Host species</b>	Rabbit
<b>Ig class</b>	Immunogen-specific rabbit IgG
<b>Purification</b>	Antigen affinity purification

### Target information

<b>Symbol</b>	MAGEL2
<b>Full name</b>	MAGE-like 2
<b>Synonyms</b>	PWLS; nM15; NDNL1
<b>Swissprot</b>	Q9UJ55

### Target Background

Prader-Willi syndrome (PWS) is caused by the loss of expression of imprinted genes in chromosome 15q11-q13 region. Affected individuals exhibit neonatal hypotonia, developmental delay, and childhood-onset obesity. Necdin (NDN), a gene involved in the terminal differentiation of neurons, localizes to this region of the genome and has been implicated as one of the genes responsible for the etiology of PWS. This gene is structurally similar to NDN, is also localized to the PWS chromosomal region, and is paternally imprinted, suggesting a possible role for it in PWS.

订购热线: 4008-898-798

#### Applications

##### Western blotting

Predicted band size: 59 kDa

Positive control: Raji cells

Recommended dilution: 200-1000

Gel: 6% SDS-PAGE

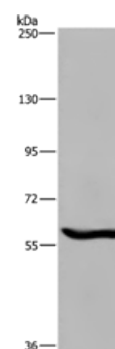
Lysate: 40 µg

Lane: Raji cells

Primary antibody: ml261884 (MAGEL2 Antibody) at dilution 1/250

Secondary antibody: Goat anti rabbit IgG at 1/8000 dilution

Exposure time: 5 minutes



##### ELISA

Recommended dilution: 1000-2000

联系电话: 4008-898-798, 021-61725725

联系QQ: 2881505695, 2881505696

邮箱: [mlbio\\_cn@yeah.net](mailto:mlbio_cn@yeah.net)

网址: [www.mlbio.cn](http://www.mlbio.cn)