

## Anti-MARVELD1 antibody

<b>Cat. No.</b>	ml261893
<b>Package</b>	25 µl/100 µl/200 µl
<b>Storage</b>	-20°C, pH7.4 PBS, 0.05% NaN <sub>3</sub> , 40% Glycerol

### Product overview

<b>Description</b>	Anti-MARVELD1 rabbit polyclonal antibody
<b>Applications</b>	ELISA, WB, IHC
<b>Immunogen</b>	Synthetic peptide of human MARVELD1
<b>Reactivity</b>	Human, Mouse
<b>Content</b>	0.6 mg/ml
<b>Host species</b>	Rabbit
<b>Ig class</b>	Immunogen-specific rabbit IgG
<b>Purification</b>	Antigen affinity purification

### Target information

<b>Symbol</b>	MARVELD1
<b>Full name</b>	MARVEL domain containing 1

**Synonyms** GB14; MARVD1; MRVLDC1; bA548K23.8

**Swissprot** Q9BSK0

### Target Background

MARVELD1 (MARVEL domain containing 1), also known as GB14, MARVD1 or MRVLDC1, is a 173 amino acid protein that is widely expressed and contains one MARVEL (MAL and related proteins for vesicle trafficking and membrane link) domain. The MARVEL domain, which is common in Occludin proteins, is a 130 amino acid motif that contains four transmembrane helices, both of which have cytoplasmic N- and C-terminal regions. Localizing to the nucleus, MARVELD1 is downregulated in primary multiple tumors of liver, bladder, ovary, vulva, breast, testis, uterus, kidney and testis. The gene encoding MARVELD1 maps to human chromosome 10, which makes up approximately 4.5% of total DNA in cells and encodes nearly 1,200 genes. Defects in some of the genes that map to chromosome 10 are associated with Charcot-Marie Tooth disease, Jackson-Weiss syndrome, Usher syndrome, nonsyndromic deafness, Wolman's syndrome and Cowden syndrome.

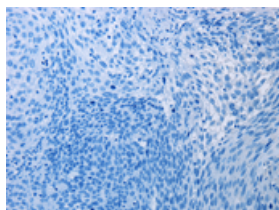
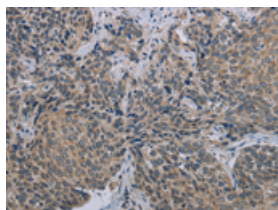
## Applications

### Immunohistochemistry

Predicted cell location: Cytoplasm

Positive control: Human cervical cancer

Recommended dilution: 50-200

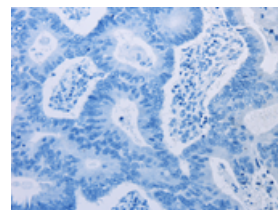
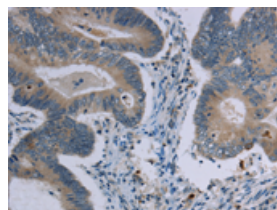


The image on the left is immunohistochemistry of paraffin-embedded Human cervical cancer tissue using ml261893(MARVELD1 Antibody) at dilution 1/40, on the right is treated with synthetic peptide. (Original magnification:  $\times 200$ )

Predicted cell location: Cytoplasm

Positive control: Human colon cancer

Recommended dilution: 50-200



The image on the left is immunohistochemistry of paraffin-embedded Human colon cancer tissue using ml261893(MARVELD1 Antibody) at dilution 1/40, on the right is treated with synthetic peptide. (Original magnification:  $\times 200$ )

### Western blotting

Predicted band size: 19 kDa

Positive control: Mouse heart tissue

Recommended dilution: 200-1000

Gel: 10%SDS-PAGE

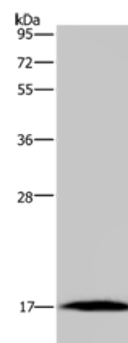
Lysate: 40  $\mu$ g

Lane: Mouse heart tissue

Primary antibody: ml261893(MARVELD1 Antibody) at dilution 1/300

Secondary antibody: Goat anti rabbit IgG at 1/8000 dilution

Exposure time: 10 minutes



## ELISA

Recommended dilution: 1000-2000

联系电话: 4008-898-798, 021-61725725

联系QQ: 2881505695, 2881505696

邮箱: [mlbio\\_cn@yeah.net](mailto:mlbio_cn@yeah.net)

网址: [www.mlbio.cn](http://www.mlbio.cn)