

Anti-ME1 antibody

Cat. No.	ml261900
Package	25 µl/100 µl/200 µl
Storage	-20°C, pH7.4 PBS, 0.05% NaN ₃ , 40% Glycerol

Product overview

Description	Anti-ME1 rabbit polyclonal antibody
Applications	ELISA, WB, IHC
Immunogen	Synthetic peptide of human ME1
Reactivity	Human, Mouse
Content	0.5 mg/ml
Host species	Rabbit
Ig class	Immunogen-specific rabbit IgG
Purification	Antigen affinity purification

Target information

Symbol	ME1
Full name	malic enzyme 1, NADP(+)-dependent, cytosolic

Synonyms malic enzyme 1, NADP(+)-dependent, cytosolic

Swissprot P48163

Target Background

This gene encodes a cytosolic, NADP-dependent enzyme that generates NADPH for fatty acid biosynthesis. The activity of this enzyme, the reversible oxidative decarboxylation of malate, links the glycolytic and citric acid cycles. The regulation of expression for this gene is complex. Increased expression can result from elevated levels of thyroid hormones or by higher proportions of carbohydrates in the diet.

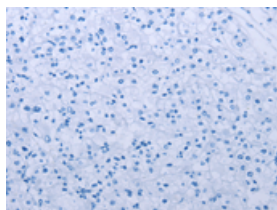
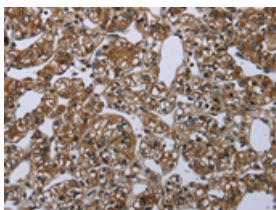
Applications

Immunohistochemistry

Predicted cell location: Cytoplasm

Positive control: Human prostate cancer

Recommended dilution: 25-100

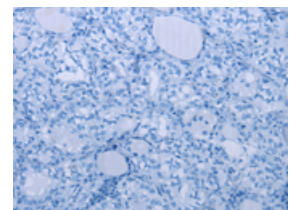
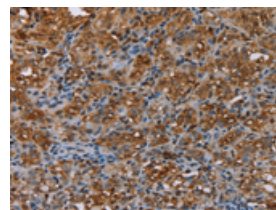


The image on the left is immunohistochemistry of paraffin-embedded Human prostate cancer tissue using ml261900(ME1 Antibody) at dilution 1/20, on the right is treated with synthetic peptide. (Original magnification: $\times 200$)

Predicted cell location: Cytoplasm

Positive control: Human thyroid cancer

Recommended dilution: 25-100



The image on the left is immunohistochemistry of paraffin-embedded Human thyroid cancer tissue using ml261900(ME1 Antibody) at dilution 1/20, on the right is treated with synthetic peptide. (Original magnification: $\times 200$)

Western blotting

Predicted band size: 64 kDa

Positive control: 293T and A431 cells

Recommended dilution: 200-1000

Gel: 8%SDS-PAGE

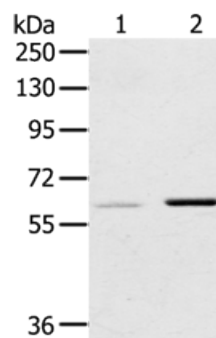
Lysate: 40 µg

Lane 1-2: 293T cells, A431 cells

Primary antibody: ml261900(ME1 Antibody) at dilution 1/200

Secondary antibody: Goat anti rabbit IgG at 1/8000 dilution

Exposure time: 15 seconds



ELISA

Recommended dilution: 1000-2000

联系电话: 4008-898-798, 021-61725725

联系QQ: 2881505695, 2881505696

邮箱: mlbio_cn@yeah.net

网址: www.mlbio.cn