

Anti-NR2F2 antibody

| | |
|-----------------|---|
| Cat. No. | ml261976 |
| Package | 25 µl/100 µl/200 µl |
| Storage | -20°C, pH7.4 PBS, 0.05% NaN ₃ , 40% Glycerol |

Product overview

| | |
|---------------------|---------------------------------------|
| Description | Anti-NR2F2 rabbit polyclonal antibody |
| Applications | ELISA, WB |
| Immunogen | Synthetic peptide of human NR2F2 |
| Reactivity | Human, Mouse, Rat |
| Content | 0.3 mg/ml |
| Host species | Rabbit |
| Ig class | Immunogen-specific rabbit IgG |
| Purification | Antigen affinity purification |

Target information

| | |
|------------------|--|
| Symbol | NR2F2 |
| Full name | nuclear receptor subfamily 2, group F, member 2 |
| Synonyms | ARP1; CHTD4; NF-E3; NR2F1; SVP40; COUPTFB; TFCOUP2; COUPTFII |
| Swissprot | P24468 |

Target Background

This gene encodes a member of the steroid thyroid hormone superfamily of nuclear receptors. The encoded protein is a ligand inducible transcription factor that is involved in the regulation of many different genes. Alternate splicing results in multiple transcript variants.

订购热线: 4008-898-798

Applications

Western blotting

Predicted band size: 46 kDa

Positive control: Human placenta tissue

Recommended dilution: 200-1000

Gel: 8%SDS-PAGE

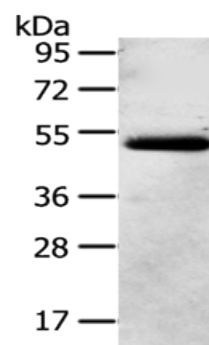
Lysate: 40 µg

Lane: Human placenta tissue

Primary antibody: ml261976(NR2F2 Antibody) at dilution 1/200

Secondary antibody: Goat anti rabbit IgG at 1/8000 dilution

Exposure time: 1 minute



ELISA

Recommended dilution: 1000-2000

联系电话: 4008-898-798, 021-61725725

联系QQ: 2881505695, 2881505696

邮箱: mlbio_cn@yeah.net

网址: www.mlbio.cn