

Anti-P2RX2 antibody

Cat. No.	ml261997
Package	25 µl/100 µl/200 µl
Storage	-20°C, pH7.4 PBS, 0.05% NaN ₃ , 40% Glycerol

Product overview

Description	Anti-P2RX2 rabbit polyclonal antibody
Applications	ELISA, WB
Immunogen	Synthetic peptide of human P2RX2
Reactivity	Human
Content	0.2 mg/ml
Host species	Rabbit
Ig class	Immunogen-specific rabbit IgG
Purification	Antigen affinity purification

Target information

Symbol	P2RX2
Full name	purinergic receptor P2X, ligand-gated ion channel, 2
Synonyms	P2X2; DFNA41
Swissprot	Q9UBL9

Target Background

The product of this gene belongs to the family of purinoceptors for ATP. This receptor functions as a ligand-gated ion channel. Binding to ATP mediates synaptic transmission between neurons and from neurons to smooth muscle. Multiple transcript variants encoding distinct isoforms have been identified for this gene.

订购热线: 4008-898-798

Applications

Western blotting

Predicted band size: 52 kDa

Positive control: Hela cells

Recommended dilution: 200-1000

Gel: 8% SDS-PAGE

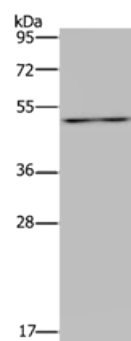
Lysate: 40 µg

Lane: Hela cells

Primary antibody: ml261997 (P2RX2 Antibody) at dilution 1/200

Secondary antibody: Goat anti rabbit IgG at 1/8000 dilution

Exposure time: 10 minutes



ELISA

Recommended dilution: 1000-2000

联系电话: 4008-898-798, 021-61725725

联系QQ: 2881505695, 2881505696

邮箱: mlbio_cn@yeah.net

网址: www.mlbio.cn