

Anti-PPP1CC antibody

Cat. No.	ml262074
Package	25 µl/100 µl/200 µl
Storage	-20°C, pH7.4 PBS, 0.05% NaN ₃ , 40% Glycerol

Product overview

Description	Anti-PPP1CC rabbit polyclonal antibody
Applications	ELISA, WB, IHC
Immunogen	Synthetic peptide of human PPP1CC
Reactivity	Human, Mouse, Rat
Content	1.2 mg/ml
Host species	Rabbit
Ig class	Immunogen-specific rabbit IgG
Purification	Antigen affinity purification

Target information

Symbol	PPP1CC
Full name	protein phosphatase 1, catalytic subunit, gamma isozyme

Synonyms PP1C; PP-1G; PPP1G

Swissprot P36873

Target Background

The protein encoded by this gene belongs to the protein phosphatase family, PP1 subfamily. PP1 is an ubiquitous serine/threonine phosphatase that regulates many cellular processes, including cell division. It is expressed in mammalian cells as three closely related isoforms, alpha, beta/delta and gamma, which have distinct localization patterns. This gene encodes the gamma isozyme. Alternatively spliced transcript variants encoding different isoforms have been found for this gene.

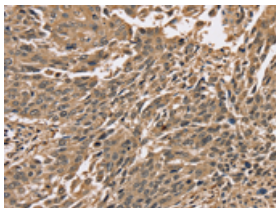
Applications

Immunohistochemistry

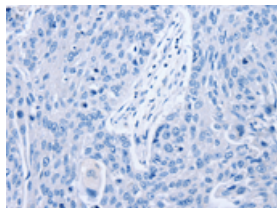
Predicted cell location: Cytoplasm or Nucleus

Positive control: Human lung cancer

Recommended dilution: 100-300



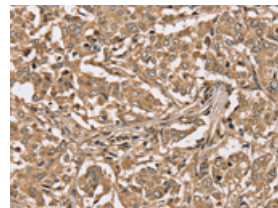
The image on the left is immunohistochemistry of paraffin-embedded Human lung cancer tissue using ml262074(PPP1CC Antibody) at dilution 1/40, on the right is treated with synthetic peptide. (Original magnification: $\times 200$)



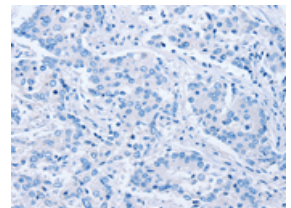
Predicted cell location: Cytoplasm or Nucleus

Positive control: Human liver cancer

Recommended dilution: 100-300



The image on the left is immunohistochemistry of paraffin-embedded Human liver cancer tissue using ml262074(PPP1CC Antibody) at dilution 1/40, on the right is treated with synthetic peptide. (Original magnification: $\times 200$)



Western blotting

Predicted band size: 37 kDa

Positive control: Jurkat, 293T and hela cells, mouse brain tissue and K562 cells

Recommended dilution: 1000-5000

Gel: 10%SDS-PAGE

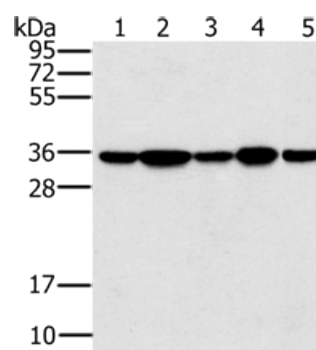
Lysate: 40 µg

Lane 1-5: Jurkat cells, 293T cells, hela cells, mouse brain tissue, K562 cells

Primary antibody: ml262074(PPP1CC Antibody) at dilution 1/200

Secondary antibody: Goat anti rabbit IgG at 1/8000 dilution

Exposure time: 1 second



ELISA

Recommended dilution: 2000-10000

联系电话: 4008-898-798, 021-61725725

联系QQ: 2881505695, 2881505696

邮箱: mlbio_cn@yeah.net

网址: www.mlbio.cn