

## Anti-PUS10 antibody

<b>Cat. No.</b>	ml262092
<b>Package</b>	25 µl/100 µl/200 µl
<b>Storage</b>	-20°C, pH7.4 PBS, 0.05% NaN <sub>3</sub> , 40% Glycerol

### Product overview

<b>Description</b>	Anti-PUS10 rabbit polyclonal antibody
<b>Applications</b>	ELISA, WB, IHC
<b>Immunogen</b>	Synthetic peptide of human PUS10
<b>Reactivity</b>	Human, Mouse
<b>Content</b>	0.2 mg/ml
<b>Host species</b>	Rabbit
<b>Ig class</b>	Immunogen-specific rabbit IgG
<b>Purification</b>	Antigen affinity purification

### Target information

<b>Symbol</b>	PUS10
<b>Full name</b>	pseudouridylate synthase 10

**Synonyms** DOBI; CCDC139

**Swissprot** Q3MIT2

### Target Background

Pseudouridination, the isomerization of uridine to pseudouridine, is the most common posttranscriptional nucleotide modification found in RNA and is essential for biologic functions such as spliceosome biogenesis. Pseudouridylate synthases, such as PUS10, catalyze pseudouridination of structural RNAs, including transfer, ribosomal, and splicing RNAs. These enzymes also act as RNA chaperones, facilitating the correct folding and assembly of tRNAs.

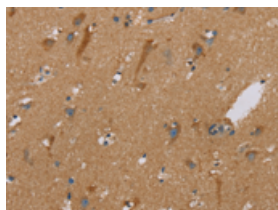
## Applications

### Immunohistochemistry

Predicted cell location: Cytoplasm

Positive control: Human brain

Recommended dilution: 50-200

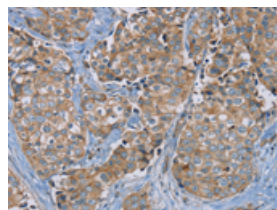


The image on the left is immunohistochemistry of paraffin-embedded Human brain tissue using ml262092(PUS10 Antibody) at dilution 1/40, on the right is treated with synthetic peptide. (Original magnification:  $\times 200$ )

Predicted cell location: Cytoplasm

Positive control: Human breast cancer

Recommended dilution: 50-200



The image on the left is immunohistochemistry of paraffin-embedded Human breast cancer tissue using ml262092(PUS10 Antibody) at dilution 1/40, on the right is treated with synthetic peptide. (Original magnification:  $\times 200$ )

### Western blotting

Predicted band size: 60 kDa

Positive control: Mouse intestine tissue

Recommended dilution: 200-1000

Gel: 8%SDS-PAGE

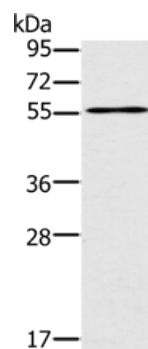
Lysate: 40  $\mu$ g

Lane: Mouse intestinum tenue tissue

Primary antibody: ml262092(PUS10 Antibody) at dilution 1/200

Secondary antibody: Goat anti rabbit IgG at 1/8000 dilution

Exposure time: 3 seconds



## ELISA

Recommended dilution: 1000-2000

联系电话: 4008-898-798, 021-61725725

联系QQ: 2881505695, 2881505696

邮箱: [mlbio\\_cn@yeah.net](mailto:mlbio_cn@yeah.net)

网址: [www.mlbio.cn](http://www.mlbio.cn)