

Anti-HIF1A antibody

Cat. No.	ml262108
Package	25 µl/100 µl/200 µl
Storage	-20°C, pH7.4 PBS, 0.05% NaN ₃ , 40% Glycerol

Product overview

Description	Anti-HIF1A rabbit polyclonal antibody
Applications	ELISA, WB
Immunogen	Synthetic peptide of human HIF1A
Reactivity	Human, Mouse, Rat
Content	0.6 mg/ml
Host species	Rabbit
Ig class	Immunogen-specific rabbit IgG
Purification	Antigen affinity purification

Target information

Symbol	HIF1A
Full name	hypoxia inducible factor 1, alpha subunit (basic helix-loop-helix transcription factor)
Synonyms	HIF1; MOP1; PASD8; HIF-1A; bHLHe78; HIF-1alpha; HIF1-ALPHA
Swissprot	Q16665

Target Background

This gene encodes the alpha subunit of transcription factor hypoxia-inducible factor-1 (HIF-1), which is a heterodimer composed of an alpha and a beta subunit. HIF-1 functions as a master regulator of cellular and systemic homeostatic response to hypoxia by activating transcription of many genes, including those involved in energy metabolism, angiogenesis, apoptosis, and other genes whose protein products increase oxygen delivery or facilitate metabolic adaptation to hypoxia. HIF-1 thus plays an essential role in embryonic vascularization, tumor angiogenesis and pathophysiology of ischemic disease.

订购热线: 4008-898-798

Applications

Western blotting

Predicted band size: 93 kDa

Positive control: 293T cells untreated and treated with cobalt chloride (0.1 mM for 4 hours)

Recommended dilution: 500-2000

Gel: 8%SDS-PAGE

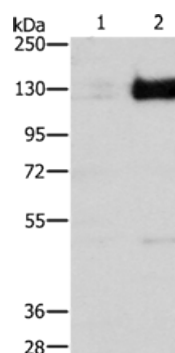
Lysate: 40 µg

Lane 1-2: 293T cells untreated with cobalt chloride, 293T cells treated with cobalt chloride (0.1 mM for 4 hours)

Primary antibody: ml262108(HIF1A Antibody) at dilution 1/750

Secondary antibody: Goat anti rabbit IgG at 1/8000 dilution

Exposure time: 2 minutes



ELISA

Recommended dilution: 2000-5000

联系电话: 4008-898-798, 021-61725725

联系QQ: 2881505695, 2881505696

邮箱: mlbio_cn@yeah.net

网址: www.mlbio.cn