

Anti-CDH4 antibody

Cat. No.	ml262115
Package	25 µl/100 µl/200 µl
Storage	-20°C, pH7.4 PBS, 0.05% NaN ₃ , 40% Glycerol

Product overview

Description	Anti-CDH4 rabbit polyclonal antibody
Applications	ELISA, WB
Immunogen	Synthetic peptide of human CDH4
Reactivity	Human, Mouse
Content	0.7 mg/ml
Host species	Rabbit
Ig class	Immunogen-specific rabbit IgG
Purification	Antigen affinity purification

Target information

Symbol	CDH4
Full name	cadherin 4, type 1, R-cadherin (retinal)
Synonyms	CAD4; RCAD; R-CAD
Swissprot	P55283

Target Background

This gene is a classical cadherin from the cadherin superfamily. The encoded protein is a calcium-dependent cell-cell adhesion glycoprotein comprised of five extracellular cadherin repeats, a transmembrane region and a highly conserved cytoplasmic tail. Based on studies in chicken and mouse, this cadherin is thought to play an important role during brain segmentation and neuronal outgrowth. In addition, a role in kidney and muscle development is indicated.

订购热线: 4008-898-798

Applications

Western blotting

Predicted band size: 100 kDa

Positive control: Mouse heart tissue, A172 and 231 cells

Recommended dilution: 500-2000

Gel: 6%SDS-PAGE

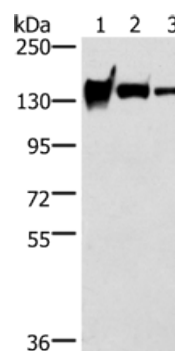
Lysate: 40 µg

Lane 1-3: Mouse heart tissue, A172 cells, 231 cells

Primary antibody: ml262115(CDH4 Antibody) at dilution 1/200

Secondary antibody: Goat anti rabbit IgG at 1/8000 dilution

Exposure time: 1 minute



ELISA

Recommended dilution: 2000-5000

联系电话: 4008-898-798, 021-61725725

联系QQ: 2881505695, 2881505696

邮箱: mlbio_cn@yeah.net

网址: www.mlbio.cn