

Anti-RHCE antibody

Cat. No.	ml262126
Package	25 µl/100 µl/200 µl
Storage	-20°C, pH7.4 PBS, 0.05% NaN ₃ , 40% Glycerol

Product overview

Description	Anti-RHCE rabbit polyclonal antibody
Applications	ELISA, WB
Immunogen	Synthetic peptide of human RHCE
Reactivity	Human
Content	0.3 mg/ml
Host species	Rabbit
Ig class	Immunogen-specific rabbit IgG
Purification	Antigen affinity purification

Target information

Symbol	RHCE
Full name	Rh blood group, CcEe antigens
Synonyms	RH; RHC; RHE; Rh4; RHPI; RhVI; RH30A; RHIXB; RhVIII; CD240CE; RhIVb(J)
Swissprot	P18577

Target Background

The Rh blood group system is the second most clinically significant of the blood groups, second only to ABO. It is also the most polymorphic of the blood groups, with variations due to deletions, gene conversions, and missense mutations. The Rh blood group includes this gene which encodes both the RhC and RhE antigens on a single polypeptide and a second gene which encodes the RhD protein. The classification of Rh-positive and Rh-negative individuals is determined by the presence or absence of the highly immunogenic RhD protein on the surface of erythrocytes.

订购热线: 4008-898-798

Applications

Western blotting

Predicted band size: 46 kDa

Positive control: Human breast infiltrative duct tissue

Recommended dilution: 500-2000

Gel: 8%SDS-PAGE

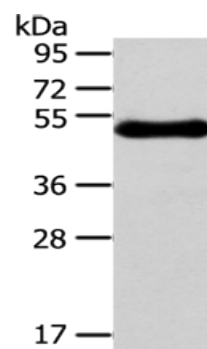
Lysate: 40 µg

Lane: Human breast infiltrative duct tissue

Primary antibody: ml262126(RHCE Antibody) at dilution 1/250

Secondary antibody: Goat anti rabbit IgG at 1/8000 dilution

Exposure time: 5 minutes



ELISA

Recommended dilution: 2000-5000

联系电话: 4008-898-798, 021-61725725

联系QQ: 2881505695, 2881505696

邮箱: mlbio_cn@yeah.net

网址: www.mlbio.cn