

Anti-RRAS antibody

Cat. No.	ml262143
Package	25 µl/100 µl/200 µl
Storage	-20°C, pH7.4 PBS, 0.05% NaN ₃ , 40% Glycerol

Product overview

Description	Anti-RRAS rabbit polyclonal antibody
Applications	ELISA, WB, IHC
Immunogen	Synthetic peptide of human RRAS
Reactivity	Human, Mouse, Rat
Content	0.5 mg/ml
Host species	Rabbit
Ig class	Immunogen-specific rabbit IgG
Purification	Antigen affinity purification

Target information

Symbol	RRAS
Full name	related RAS viral (r-ras) oncogene homolog

Synonyms

Swissprot P10301

Target Background

The R-Ras protein has been shown to interact with the Bcl-2 gene product involved in a signaling pathway that intervenes with apoptosis. Positions 38 and 87 (analogous to positions 12 and 61 in H-Ras) mutants of R-Ras have been shown to be capable of activating oncogenic function. Data has been obtained indicating that R-Ras may exert its biological effect by means of modulating the activity of the Raf-1 kinase on its direct downstream effectors.

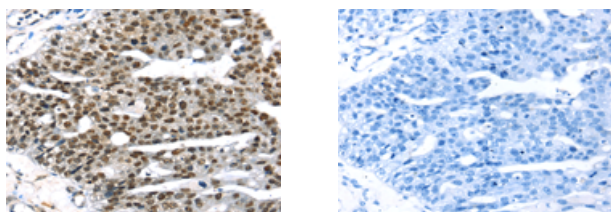
Applications

Immunohistochemistry

Predicted cell location: Cytoplasm and Nucleus

Positive control: Human breast cancer

Recommended dilution: 25-100



The image on the left is immunohistochemistry of paraffin-embedded Human breast cancer tissue using ml262143(RRAS Antibody) at dilution 1/25, on the right is treated with synthetic peptide. (Original magnification: $\times 200$)

Western blotting

Predicted band size: 23 kDa

Positive control: PC3 and A549 cells

Recommended dilution: 500-2000

Gel: 6%SDS-PAGE

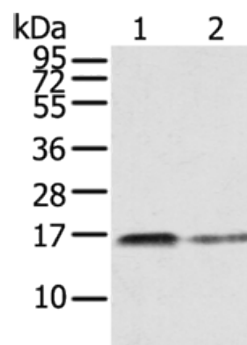
Lysate: 40 µg

Lane 1-2: PC3 cells, A549 cells

Primary antibody: ml262143(RRAS Antibody) at dilution 1/350

Secondary antibody: Goat anti rabbit IgG at 1/8000 dilution

Exposure time: 30 seconds



ELISA

Recommended dilution: 2000-5000

联系电话: 4008-898-798, 021-61725725

联系QQ: 2881505695, 2881505696

邮箱: mlbio_cn@yeah.net

网址: www.mlbio.cn