

Anti-SEMA6A antibody

Cat. No.	ml262180
Package	25 µl/100 µl/200 µl
Storage	-20°C, pH7.4 PBS, 0.05% NaN ₃ , 40% Glycerol

Product overview

Description	Anti-SEMA6A rabbit polyclonal antibody
Applications	ELISA, WB
Immunogen	Synthetic peptide of human SEMA6A
Reactivity	Human, Mouse
Content	0.3 mg/ml
Host species	Rabbit
Ig class	Immunogen-specific rabbit IgG
Purification	Antigen affinity purification

Target information

Symbol	SEMA6A
Full name	sema domain, transmembrane domain (TM), and cytoplasmic domain, (semaphorin) 6A
Synonyms	VIA; SEMA; HT018; SEMAQ; SEMA6A1
Swissprot	Q9H2E6

Target Background

The transmembrane semaphorin SEMA6A is expressed in developing neural tissue and is required for proper development of the thalamocortical projection. Cell surface receptor for PLXNA2 that plays an important role in cell-cell signaling. Required for normal granule cell migration in the developing cerebellum. Promotes reorganization of the actin cytoskeleton and plays an important role in axon guidance in the developing central nervous system.

订购热线: 4008-898-798

Applications

Western blotting

Predicted band size: 114 kDa

Positive control: 293T, Lovo and HepG2 cells

Recommended dilution: 200-1000

Gel: 6%SDS-PAGE

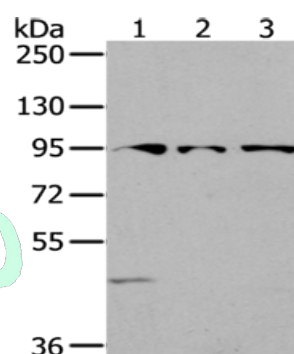
Lysate: 40 µg

Lane 1-3: 293T cells, Lovo cells, HepG2 cells

Primary antibody: ml262180(SEMA6A Antibody) at dilution 1/200

Secondary antibody: Goat anti rabbit IgG at 1/8000 dilution

Exposure time: 2 minutes



ELISA

Recommended dilution: 1000-2000

联系电话: 4008-898-798, 021-61725725

联系QQ: 2881505695, 2881505696

邮箱: mlbio_cn@yeah.net

网址: www.mlbio.cn