

Anti-SLC16A9 antibody

Cat. No.	ml262214
Package	25 µl/100 µl/200 µl
Storage	-20°C, pH7.4 PBS, 0.05% NaN ₃ , 40% Glycerol

Product overview

Description	Anti-SLC16A9 rabbit polyclonal antibody
Applications	ELISA, WB
Immunogen	Synthetic peptide of human SLC16A9
Reactivity	Human
Content	0.4 mg/ml
Host species	Rabbit
Ig class	Immunogen-specific rabbit IgG
Purification	Antigen affinity purification

Target information

Symbol	SLC16A9
Full name	solute carrier family 16, member 9p
Synonyms	solute carrier family 16, member 9p
Swissprot	Q7RTY1

Target Background

MCT9 (monocarboxylate transporter 9), also known as SLC16A9 (solute carrier family 16, member 9 (monocarboxylic acid transporter 9)) or C10orf36, is a 509 amino acid multi-pass membrane protein that belongs to the major facilitator superfamily. Like other MCT proteins, MCT9 functions as a monocarboxylate transporter that catalyzes the rapid proton-linked transport of monocarboxylates across the plasma membrane.

订购热线: 4008-898-798

Applications

Western blotting

Predicted band size: 56 kDa

Positive control: Human normal stomach and stomach cancer tissue

Recommended dilution: 500-2000

Gel: 8%SDS-PAGE

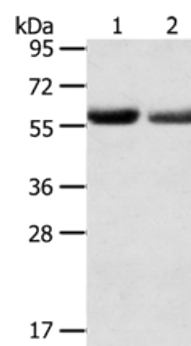
Lysate: 60 µg

Lane 1-2: Human normal stomach tissue, Human stomach cancer tissue

Primary antibody: ml262214(SLC16A9 Antibody) at dilution 1/200

Secondary antibody: Goat anti rabbit IgG at 1/8000 dilution

Exposure time: 5 minutes



ELISA

Recommended dilution: 2000-5000

联系电话: 4008-898-798, 021-61725725

联系QQ: 2881505695, 2881505696

邮箱: mlbio_cn@yeah.net

网址: www.mlbio.cn