

Anti-SLC16A11 antibody

Cat. No.	ml262216
Package	25 µl/100 µl/200 µl
Storage	-20°C, pH7.4 PBS, 0.05% NaN ₃ , 40% Glycerol

Product overview

Description	Anti-SLC16A11 rabbit polyclonal antibody
Applications	ELISA, WB
Immunogen	Synthetic peptide of human SLC16A11
Reactivity	Human, Mouse
Content	1.1 mg/ml
Host species	Rabbit
Ig class	Immunogen-specific rabbit IgG
Purification	Antigen affinity purification

Target information

Symbol	SLC16A11
Full name	solute carrier family 16, member 11
Synonyms	MCT11
Swissprot	Q8NCK7

Target Background

MCT11 (Monocarboxylate transporter 11), also known as SLC16A11 (Solute carrier family 16 member 11), is a 471 proton-linked monocarboxylate transporter that catalyzes the rapid transport of monocarboxylates across the plasma membrane.

订购热线: 4008-898-798

Applications

Western blotting

Predicted band size: 48 kDa

Positive control: Human normal liver tissue

Recommended dilution: 200-1000

Gel: 6%SDS-PAGE

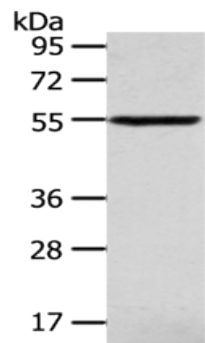
Lysate: 40 µg

Lane: Human normal liver tissue

Primary antibody: ml262216(SLC16A11 Antibody) at
dilution 1/320

Secondary antibody: Goat anti rabbit IgG at 1/8000 dilution

Exposure time: 10 minutes



ELISA

Recommended dilution: 1000-2000

联系电话: 4008-898-798, 021-61725725

联系QQ: 2881505695, 2881505696

邮箱: mlbio_cn@yeah.net

网址: www.mlbio.cn