

Anti-SLC17A1 antibody

Cat. No.	ml262265
Package	25 µl/100 µl/200 µl
Storage	-20°C, pH7.4 PBS, 0.05% NaN ₃ , 40% Glycerol

Product overview

Description	Anti-SLC17A1 rabbit polyclonal antibody
Applications	ELISA, WB
Immunogen	Synthetic peptide of human SLC17A1
Reactivity	Human
Content	0.6 mg/ml
Host species	Rabbit
Ig class	Immunogen-specific rabbit IgG
Purification	Antigen affinity purification

Target information

Symbol	SLC17A1
Full name	solute carrier family 17 (organic anion transporter), member 1
Synonyms	NPT1; NPT-1; NAPI-1
Swissprot	Q14916

Target Background

NPT1, also called sodium-dependent phosphate transport protein, belongs to the organic anion transporter family, SLC17A. It is mainly expressed in the kidney transporting small organic anions such as PAH (para-aminohippurate), but it is also found in the liver and brain. NPT1 localizes to the apical membrane of renal proximal tubular cells and functions as a voltage driven organic anion/Cl-exchanger. It also plays a role in maintaining phosphate homeostasis. The expression of NPT1 is transcriptionally regulated by HNF-1 α and HNF-3 β . Indomethacin and salicylate inhibit NPT1-mediated PAH transport.

订购热线: 4008-898-798

Applications

Western blotting

Predicted band size: 51 kDa

Positive control: Human kidney pericarcinous and kidney cancer tissue

Recommended dilution: 500-2000

Gel: 8%SDS-PAGE

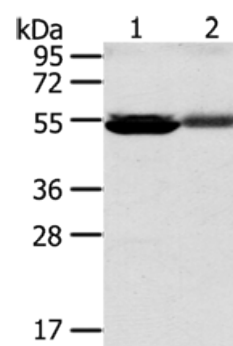
Lysate: 60 µg

Lane 1-2: Human kidney pericarcinous tissue, Human kidney cancer tissue

Primary antibody: ml262265(SLC17A1 Antibody) at dilution 1/200

Secondary antibody: Goat anti rabbit IgG at 1/8000 dilution

Exposure time: 30 seconds



ELISA

Recommended dilution: 2000-5000

联系电话: 4008-898-798, 021-61725725

联系QQ: 2881505695, 2881505696

邮箱: mlbio_cn@yeah.net

网址: www.mlbio.cn