

Anti-SLIT2 antibody

Cat. No.	ml262267
Package	25 µl/100 µl/200 µl
Storage	-20°C, pH7.4 PBS, 0.05% NaN ₃ , 40% Glycerol

Product overview

Description	Anti-SLIT2 rabbit polyclonal antibody
Applications	ELISA, WB, IHC
Immunogen	Synthetic peptide of human SLIT2
Reactivity	Human, Mouse, Rat
Content	0.4 mg/ml
Host species	Rabbit
Ig class	Immunogen-specific rabbit IgG
Purification	Antigen affinity purification

Target information

Symbol	SLIT2
Full name	slit homolog 2 (Drosophila)

Synonyms SLIL3; Slit-2

Swissprot O94813

Target Background

Secreted leucine-rich repeat-containing proteins 1-3 (Slit1-3) are secreted glycoproteins that influence axonal guidance and mediate normal neural development by acting as high-affinity signaling ligands for the repulsive guidance receptor, Roundabout (Robo). Within the developing central nervous system (CNS) of different vertebrate systems, Slit proteins are expressed in equivalent regions, suggesting a conserved function among vertebrate homologs. Slit is expressed in the midline of the central nervous system in both vertebrates and invertebrates, where it functions as a regulatory factor of mesodermal cell movement during gastrulation. Slit2 is a short range inhibitory guidance cue for retinal ganglion cell (RGC) axons that may mediate spatial progression of RGCs.

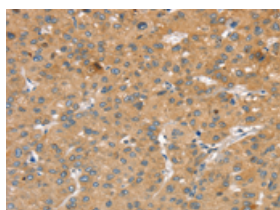
Applications

Immunohistochemistry

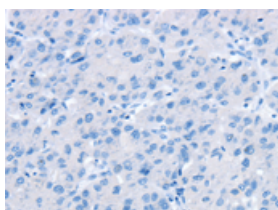
Predicted cell location: Cytoplasm

Positive control: Human liver cancer

Recommended dilution: 25-100



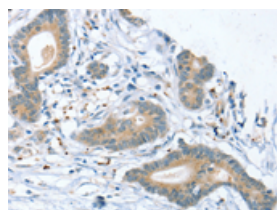
The image on the left is immunohistochemistry of paraffin-embedded Human liver cancer tissue using ml262267(SLIT2 Antibody) at dilution 1/30, on the right is treated with synthetic peptide. (Original magnification: ×200)



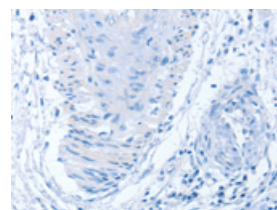
Predicted cell location: Cytoplasm

Positive control: Human colon cancer

Recommended dilution: 25-100



The image on the left is immunohistochemistry of paraffin-embedded Human colon cancer tissue using ml262267(SLIT2 Antibody) at dilution 1/30, on the right is treated with synthetic peptide. (Original magnification: ×200)



Western blotting

Predicted band size: 170 kDa

Positive control: Mouse bladder tissue

Recommended dilution: 200-1000

Gel: 6%SDS-PAGE

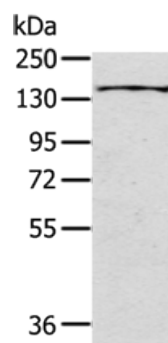
Lysate: 40 μ g

Lane: Mouse bladder tissue

Primary antibody: ml262267(SLIT2 Antibody) at dilution 1/200

Secondary antibody: Goat anti rabbit IgG at 1/8000 dilution

Exposure time: 1 minute



ELISA

Recommended dilution: 1000-2000

联系电话: 4008-898-798, 021-61725725

联系QQ: 2881505695, 2881505696

邮箱: mlbio_cn@yeah.net

网址: www.mlbio.cn