

Anti-SMN1 antibody

Cat. No.	ml262277
Package	25 µl/100 µl/200 µl
Storage	-20°C, pH7.4 PBS, 0.05% NaN ₃ , 40% Glycerol

Product overview

Description	Anti-SMN1 rabbit polyclonal antibody
Applications	ELISA, WB
Immunogen	Synthetic peptide of human SMN1
Reactivity	Human
Content	0.2 mg/ml
Host species	Rabbit
Ig class	Immunogen-specific rabbit IgG
Purification	Antigen affinity purification

Target information

Symbol	SMN1
Full name	survival of motor neuron 1, telomeric
Synonyms	SMA; SMN; SMA1; SMA2; SMA3; SMA4; SMA@; SMNT; BCD541; GEMIN1; TDRD16A; T-BCD541
Swissprot	Q16637

Target Background

This gene is part of a 500 kb inverted duplication on chromosome 5q13. This duplicated region contains at least four genes and repetitive elements which make it prone to rearrangements and deletions. The repetitiveness and complexity of the sequence have also caused difficulty in determining the organization of this genomic region. The telomeric and centromeric copies of this gene are nearly identical and encode the same protein.

订购热线: 4008-898-798

Applications

Western blotting

Predicted band size: 32 kDa

Positive control: Hepg2, hela and 293T cells

Recommended dilution: 200-1000

Gel: 8%SDS-PAGE

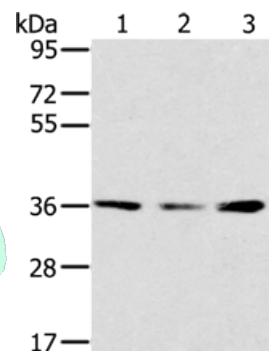
Lysate: 40 µg

Lane 1-3: Hepg2 cells, hela cells, 293T cells

Primary antibody: ml262277(SMN1 Antibody) at dilution 1/200

Secondary antibody: Goat anti rabbit IgG at 1/8000 dilution

Exposure time: 5 minutes



ELISA

Recommended dilution: 1000-2000

联系电话: 4008-898-798, 021-61725725

联系QQ: 2881505695, 2881505696

邮箱: mlbio_cn@yeah.net

网址: www.mlbio.cn