

Anti-SMYD5 antibody

Cat. No.	ml262279
Package	25 µl/100 µl/200 µl
Storage	-20°C, pH7.4 PBS, 0.05% NaN ₃ , 40% Glycerol

Product overview

Description	Anti-SMYD5 rabbit polyclonal antibody
Applications	ELISA, WB
Immunogen	Synthetic peptide of human SMYD5
Reactivity	Human, Mouse
Content	0.2 mg/ml
Host species	Rabbit
Ig class	Immunogen-specific rabbit IgG
Purification	Antigen affinity purification

Target information

Symbol	SMYD5
Full name	SMYD family member 5
Synonyms	RRG1; RAI15; NN8-4AG; ZMYND23
Swissprot	Q6GMV2

Target Background

The SMYD (SET and MYND domain) family of lysine methyltransferases (KMTs) plays pivotal roles in various cellular processes, including gene expression regulation and DNA damage response. SMYD1, SMYD2, and SMYD3 share a high degree of sequence homology and, with the exception of SMYD5, human SMYD proteins harbor at least one C-terminal tetratricopeptide repeat (TPR) domain. The SMYD proteins have been found to be linked to various cancers and biological processes.

订购热线: 4008-898-798

Applications

Western blotting

Predicted band size: 47 kDa

Positive control: HT-29, 231, hela and A549 cells

Recommended dilution: 500-2000

Gel: 8%SDS-PAGE

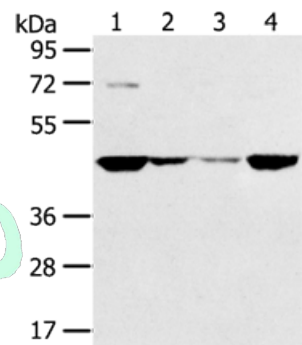
Lysate: 40 µg

Lane 1-4: HT29 cells, 231 cells, hela cells, A549 cells

Primary antibody: ml262279(SMYD5 Antibody) at dilution 1/200

Secondary antibody: Goat anti rabbit IgG at 1/8000 dilution

Exposure time: 1 minute



ELISA

Recommended dilution: 2000-5000

联系电话: 4008-898-798, 021-61725725

联系QQ: 2881505695, 2881505696

邮箱: mlbio_cn@yeah.net

网址: www.mlbio.cn